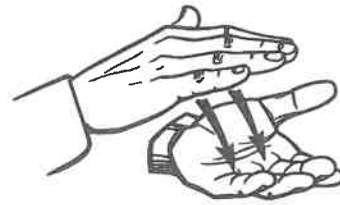
**EDUCATION**

With palms facing each other, move both *E* hands forward from the forehead a few times.

**Memory aid:** Suggests the mind's involvement in giving and receiving information.

**SCHOOL**

Clap the hands two or three times.

**Memory aid:** Symbolizes a teacher clapping for attention.

**COLLEGE**

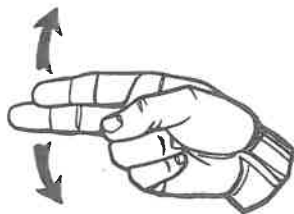
Place the right flat palm on the left upturned flat palm, then make a counterclockwise circle with the right hand above the left.

**Memory aid:** The first part of the sign is similar to the clapping sign for *school*. The second part shows that this is something above and superior to a school.

**GALLAUDET (college), GLASSES**

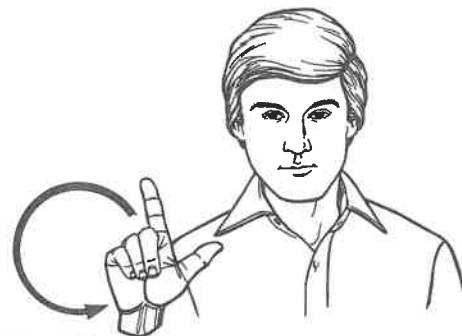
Place the fingers and thumb of the right *G* hand above and below the right eye at the side. Move the fingers back to the ear while closing them.

**Memory aid:** Suggests a person who wears *glasses*. Thomas Hopkins Gallaudet, founder of *Gallaudet College* for the deaf, wore *glasses*.

**HISTORY**

Shake the right *H* hand up and down a short distance.

**Memory aid:** The initial indicates the word, and the action can suggest the up-and-down experiences of *history*.

**LIBRARY**

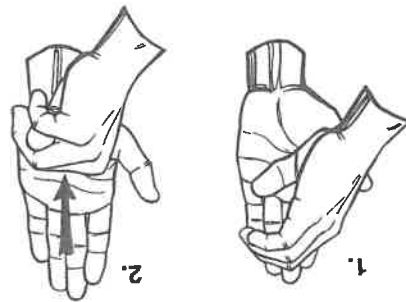
Make a small clockwise circle with the right *L* hand.

**Memory aid:** The initial indicates the word, which requires context and simultaneous lipreading for full comprehension.

**CURRICULUM**

Hold the thumb and index-finger side of the right hand against the fingers of the left flat hand. Move the right C hand down to the base of the left hand while forming an M hand.

**Memory aid:** The first and last letters of the word.



**MAJOR, AREA, FIELD, SPECIALTY**  
 Point the fingers of the left hand forward with the palm facing right. Move the little-finger edge of the right flat hand forward along the left index finger.

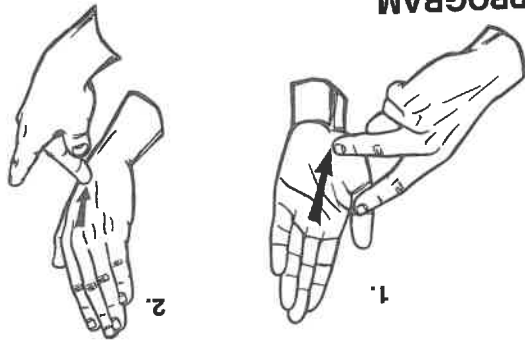
**Memory aid:** Suggests the idea of going in a definite direction.



**PROGRAM**

Move the middle finger of the right P hand down the left flat palm; then down the back of the left hand. Twist the left hand slightly between the two phases of this sign so that the observer can see clearly.

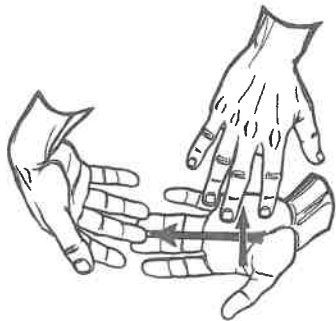
**Memory aid:** Suggests a sheet of paper that is printed on both sides.



**SCHEDULE**

Hold the left open hand to the front with palm facing right. Move the right open hand down across the left hand with palms facing; then move the back of the right hand across the left hand from left to right.

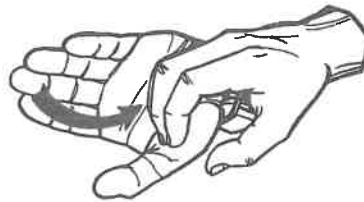
**Memory aid:** Suggests the vertical and horizontal lines printed on a schedule sheet.



**COURSE**

Place the little-finger edge of the right C hand against the fingers of the left flat hand. The left palm can face up or toward self. Move the C hand down to the base of the left hand.

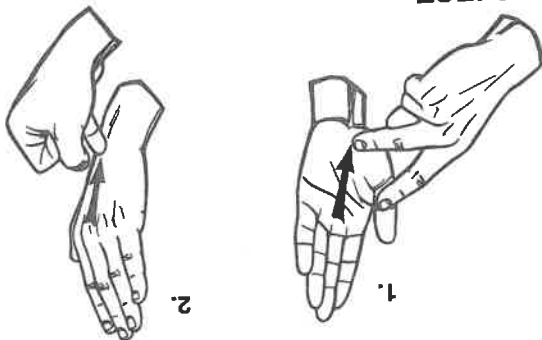
**Memory aid:** The initial indicates the word, and the action is similar to the sign for lesson.

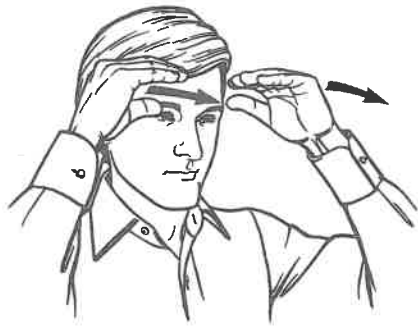


**PROJECT**

Move the middle finger of the right P hand down the left flat palm; then move the little finger of the right / hand down the back of the left flat hand. Twist the left hand slightly between the two phases of this sign so that the observer can see clearly.

**Memory aid:** The initial suggests the word.

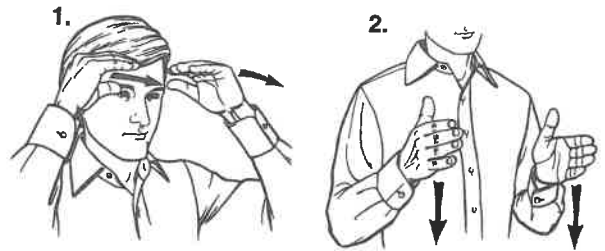




**TEACH, EDUCATE, INDOCTRINATE, INSTRUCT**

Position both open *and* hands at the front and sides of the head, then move them forward while simultaneously forming closed *and* hands.

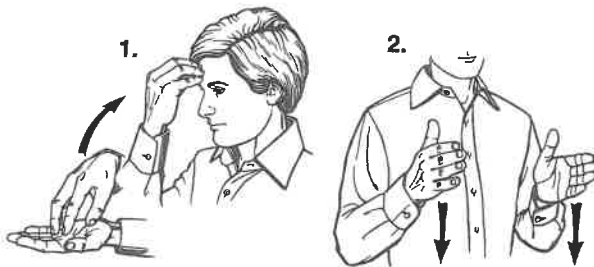
**Memory aid:** Suggests pulling out knowledge from the mind and presenting it to others.



**TEACHER**

Position both open *and* hands at the front and sides of the head; then move them forward while simultaneously forming closed *and* hands. Add the sign for *person* (*personalizing word ending*).

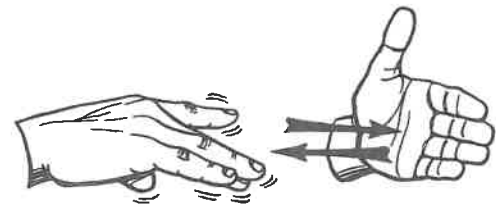
**Memory aid:** Symbolizes a person who pulls out knowledge from the mind and presents it to others.



**STUDENT**

Place the fingers of the right open hand on the upturned left palm. Close the right fingers as the hand is moved to the forehead. The fingertips are then placed on the forehead. Add the sign for *person* (*personalizing word ending*).

**Memory aid:** Right hand seems to be taking information from left hand and putting it into the mind.



**STUDY**

Point the right open fingers toward the left flat hand. Move the right hand back and forth a short distance from the left while simultaneously wiggling the right fingers.

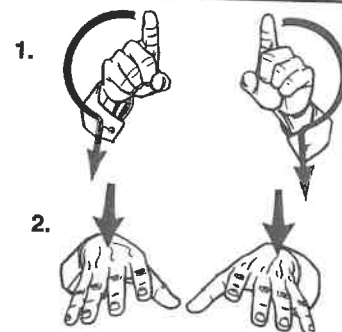
**Memory aid:** The right hand seems to be *studying* the left hand intently. The left hand can represent a book.



**LEARN**

Place the fingers of the right open hand on the upturned left palm. Close the right fingers as the hand is moved to the forehead. The fingertips are then placed on the forehead.

**Memory aid:** The right hand seems to be taking information from the left hand and putting it into the mind. The left hand can represent a book.



**TEST, EXAMINATION, QUIZ**

Hold both index fingers up and draw the shape of question marks in opposite directions, then open both hands and move them forward.

**Memory aid:** Suggests that questions are sent out.

**FRESHMAN**

Touch the fourth finger of the open left hand with the right index finger.

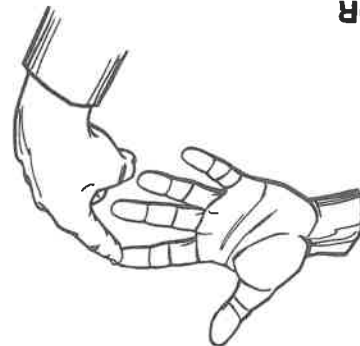
**Memory aid:** Counting from the thumb, a *freshman* still has four years of study to complete.



**JUNIOR**

Touch the index finger of the left open hand with the right index finger.

**Memory aid:** Counting from the thumb, a *junior* still has two years of study to complete.



**SENIOR**

Touch the thumb of the open left hand with the right index finger.

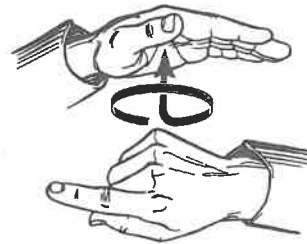
**Memory aid:** Counting from the thumb, a *senior* has only one year of study to complete.



**GRADUATE**

Make a small clockwise circle with the right hand and bring it down onto the left flat palm.

**Memory aid:** The initial indicates the word, and the action is similar to that for *seal*. Therefore, a *graduate's* education is sealed.

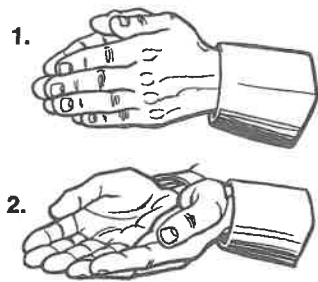


**DIPLOMA, DEGREE**

Place the thumb and index-finger sides of both hands together, then move them horizontally away from each other to the sides.

**Memory aid:** Symbolizes the cylindrical shape of a *diploma*.





**BOOK, TEXTBOOK, VOLUME**

Place the hands palm to palm, with fingers pointing forward. Open both hands to the palm-up position while maintaining contact with the little fingers.

**Memory aid:** Pictures the opening of a *book*.



**WORD**

Hold the left index finger up with palm facing right; then place the thumb and index finger of the right Q hand against it.

**Memory aid:** Symbolizes that a *word* is just a small section of a sentence.



**LINE**

Trace a line down the center of the left flat hand with the right little finger.

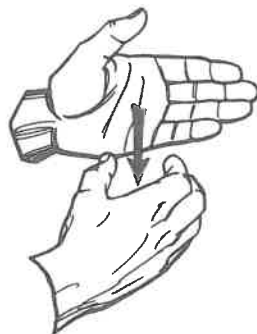
**Memory aid:** Illustrates a straight *line*.



**PARAGRAPH**

Place the thumb and fingertips of the right C hand against the left flat palm.

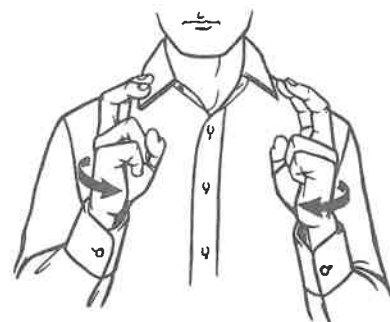
**Memory aid:** The space between the right thumb and fingers can indicate the depth of a *paragraph* on a page.



**CHAPTER**

Move the thumb and fingertips of the right C hand downward across the left flat palm.

**Memory aid:** The initial position of this sign is similar to that for *paragraph*, but the action suggests something of greater length than a paragraph.



**QUOTE, CAPTION, CITE, SUBJECT, THEME, TITLE, TOPIC**

Hold both curved V hands to the front with palms facing forward. Twist them simultaneously so that the palms face each other.

**Memory aid:** Symbolizes quotation marks.

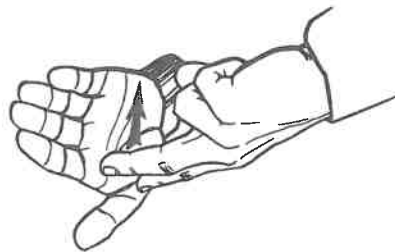
**VOCABULARY**

Place the tips of the right V fingers against the upright left index finger. The right palm faces forward and the left palm faces right.  
 Memory aid: The initial suggests the word, and the position is related to the sign for word.



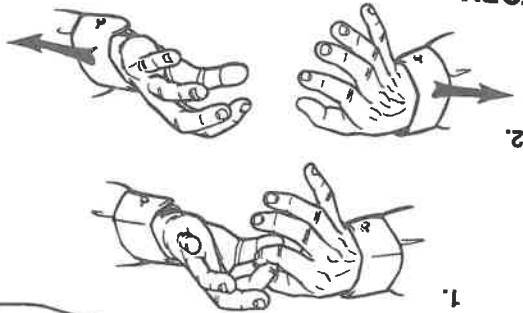
**READ**

Point the right V fingers at the left flat palm and move them downward.  
 Memory aid: The V fingers symbolize two eyes reading a book.



**STORY, TALE**

Link the thumbs and index fingers of both F hands and pull them apart several times.  
 Memory aid: Suggests many sentences linked together to make a story.



**WRITE**

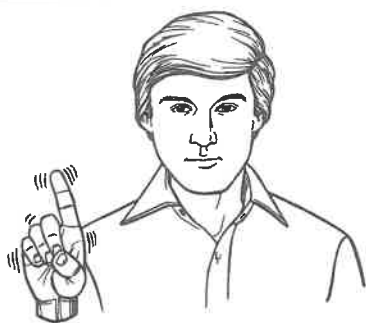
Touch the right index finger and thumb, with the other fingers across the flat left palm with a wavy motion.  
 Memory aid: Symbolizes writing on paper.



**PAPER**

Strike the heel of the left upturned palm against the heel of the right hand, moving the right hand to the left to perform the movement. The right hand is turned palm up. The heel of the right hand is striking the left palm.  
 Memory aid: Can suggest the process of making paper.

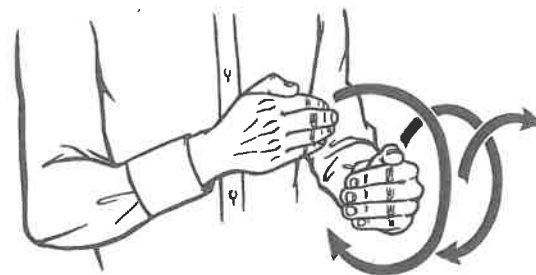




**DICTIONARY**

Hold the right *D* hand up and shake it.

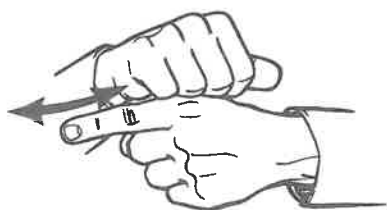
**Memory aid:** The initial indicates the word, which requires context and simultaneous lipreading for full comprehension.



**PROCESS, PROCEDURE, PROGRESS**

With the palms facing in, roll both bent hands over each other a few times with a forward motion.

**Memory aid:** Suggests that action continues while forward *progress* is made.



**PRACTICE, DISCIPLINE, TRAINING**

Rub the knuckles of the right *A* hand back and forth across the left index finger. A *T* hand can be used for *training*.

**Memory aid:** The right hand seems to be polishing the left index finger to improve the shine, just as *practice* will improve quality.



**OPPORTUNITY**

Hold both *O* hands to the front with palms down. Move both hands forward and up while forming *P* hands.

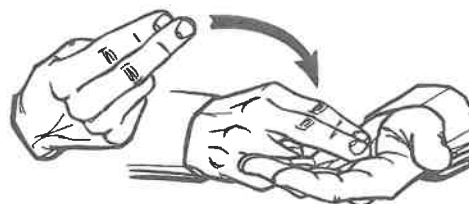
**Memory aid:** The first two letters of *opportunity* are signed.



**BUSY**

Tap the wrist of the left closed palm-down hand with the wrist of the right *B* hand, which has palm facing forward. The right hand moves from right to left as it taps the left wrist.

**Memory aid:** The initial indicates the word, and the action suggests the sign for *work*.

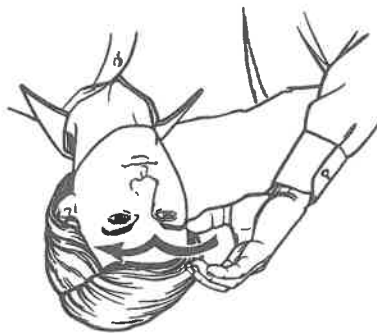


**SIGNATURE, REGISTER**

Slap the right *H* fingers down onto the left upturned palm.

**Memory aid:** The right hand identifies the place for *signing*.

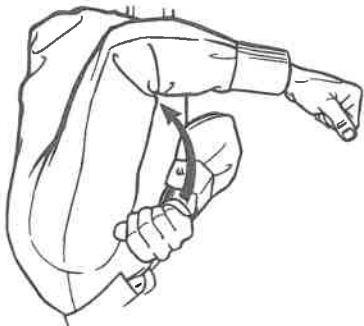




**COMPUTER**  
 Move the right C hand, palm left, across the forehead in two arcs from right to left. *Note:* Computer can be signed several ways. See *alternative* on page 274.

**Memory aid:** The initial indicates the word, and the location in front of the brain suggests computers contain knowledge.

**AUTHORITY, ENERGY**  
 Make a downward arc with the right A hand (or curved hand) from the left shoulder to the inside of the left elbow. Use the E hand for *energy*.  
**Memory aid:** Suggests the power of a biceps muscle.



**PROFESSION, PROFESSIONAL**

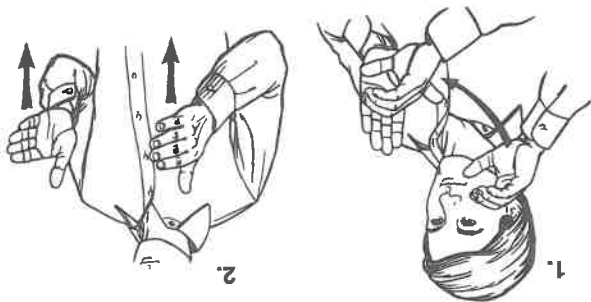
Point the fingers of the left hand forward with the palm facing right. Move the initial P sign of the right hand forward along the left index fingers.  
**Memory aid:** Suggests the idea of moving forward in a profession.

**WRITER, REPORTER**

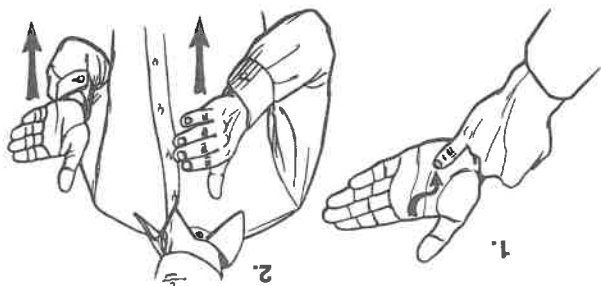
Touch the right index finger and thumb with the other fingers closed; then move the right hand across the left hand from the base of the palm to fingertips, and repeat. Add the sign for person (*personalizing word ending*).  
**Memory aid:** Suggests a person who is writing.

**PHOTOGRAPHER**

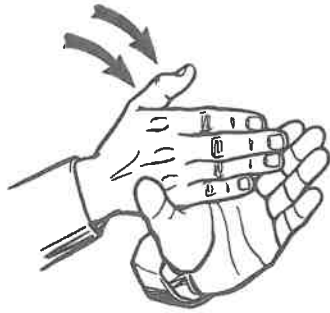
Move the right C hand down and forward from the right side of the face until the thumb side of the right C hand is placed against the left flat palm. Add the sign for person (*personalizing word ending*).  
**Memory aid:** A combination of the signs for picture and person.



**ARTIST**  
 Hold the left flat hand to the front with the palm facing left; then trace a wavy line over the left palm with the right I finger. End with the sign for person (*personalizing word ending*).  
**Memory aid:** Symbolizes a person using a pencil or brush.



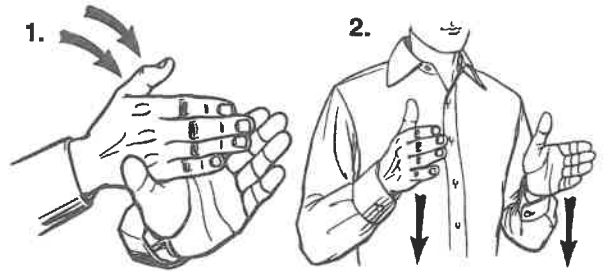




**PSYCHOLOGY**

Place the little-finger edge of the right flat hand on the palm-forward left hand between the thumb and index finger. The movement is often repeated.

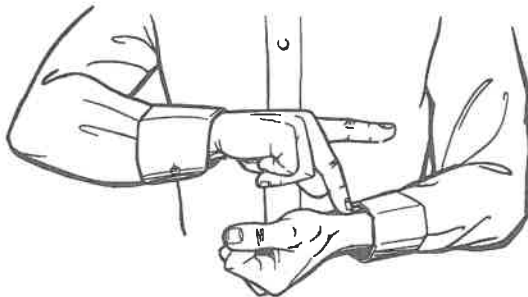
**Memory aid:** The right hand suggests a dividing line between the left thumb and index finger. *Psychologists* attempt to divide and analyze the mind.



**PSYCHOLOGIST**

Strike the little-finger edge of the right flat hand on the palm-forward left hand between the thumb and index finger, and repeat. Add the sign for *person* (*personalizing word ending*).

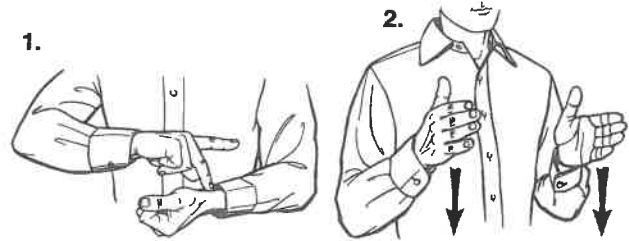
**Memory aid:** The first action of the right hand suggests a division, which can in turn suggest a person who divides and analyzes the mind.



**PSYCHIATRY**

Place the right *P* hand on the upturned left wrist.

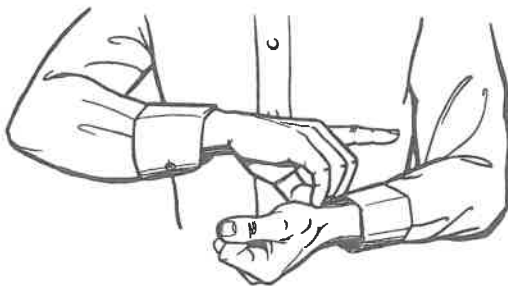
**Memory aid:** As a doctor takes a person's pulse rate, *psychiatry* studies the working of the mind.



**PSYCHIATRIST**

Place the right *P* hand on the upturned left wrist. Then sign *person* (*personalizing word ending*) by holding both flat open hands to the front with palms facing; then move them down simultaneously.

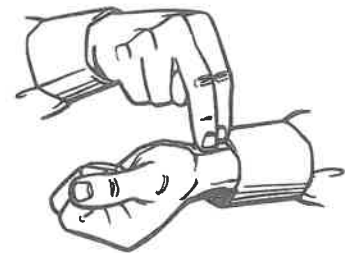
**Memory aid:** A *psychiatrist* attempts to put his finger on the workings of the mind.



**DOCTOR, PHYSICIAN, SURGEON**

Place the right *D* hand or *M* fingers on the upturned left wrist.

**Memory aid:** Suggests taking a person's pulse rate.



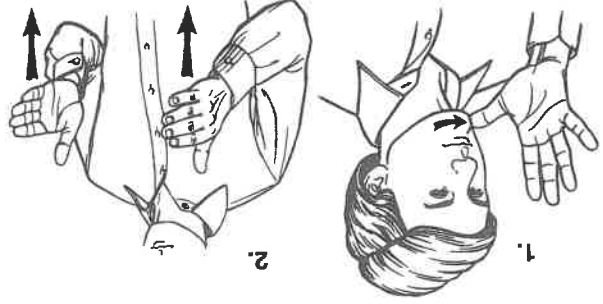
**NURSE**

Place the right extended *N* fingertips on the upturned left wrist.

**Memory aid:** The initial indicates the word, and the action suggests the taking of a person's pulse rate.

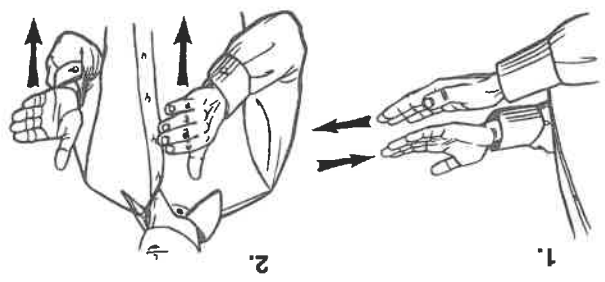
**FARMER**

Place the thumb of the right open hand on the left side of the chin with the palm facing in. Rub the right thumb across the chin to the right. Add the sign for person (personalizing word ending).  
**Memory aid:** Suggests an unshaven farmer.



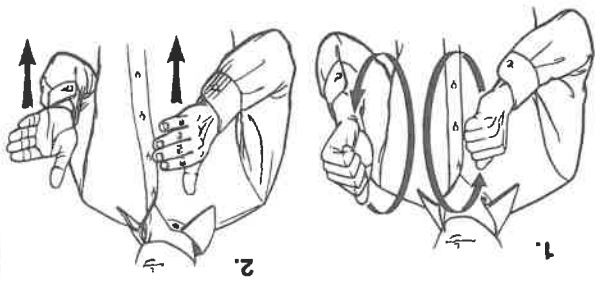
**WAITER, SERVANT, WAITRESS**

Move both upturned flat hands back and forth alternately. Add the sign for person (personalizing word ending).  
**Memory aid:** The movement suggests someone who offers something to another.



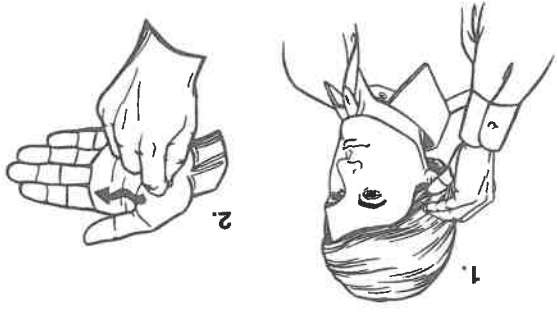
**ACTOR, ACTRESS**

Rotate both A hands inward toward the body with the palms facing each other; then add the sign for person (personalizing word ending).  
**Memory aid:** The initialized hands indicate the words, and the movement suggests the action that accompanies drama.



**SECRETARY**

Remove an imaginary pencil from above the right ear, and mimic handwriting action on the left flat hand.  
**Memory aid:** Suggests a secretary taking notes on a pad.



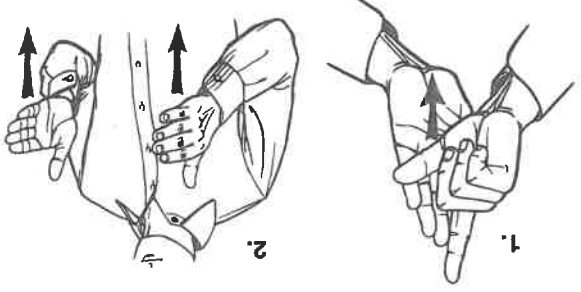
**DENTIST**

Touch the teeth with the thumb of the right D hand.  
**Memory aid:** The initial and location combined suggest the meaning.



**LAWYER, ATTORNEY**

Place the index and thumb side of the right L hand on the front of the palm-forward left hand. Begin near the top; then move the right hand downward in a small arc to the base of the left hand. Add the sign for person (personalizing word ending).  
**Memory aid:** The right hand seems to be pointing out written laws on a printed page.

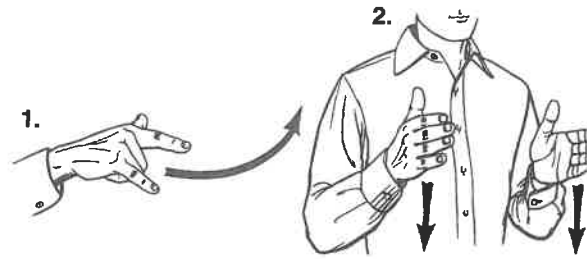




**ASSISTANT**

Bring the right *L* hand up under the closed left hand and touch the little-finger edge of the left hand with the right thumb. Sometimes the left hand remains open.

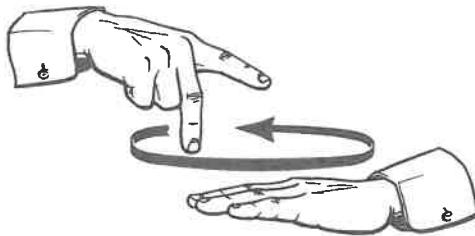
**Memory aid:** Suggests support from underneath.



**PILOT**

Make a forward-upward sweeping motion with the right *Y* hand which also has its index finger extended. Add the sign for *person* (*personalizing word ending*).

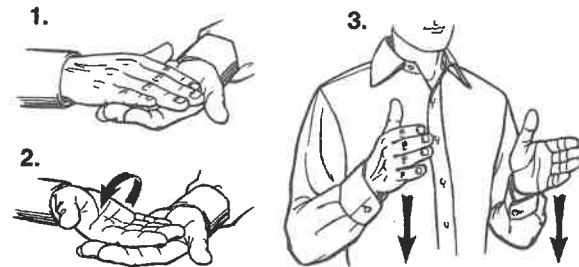
**Memory aid:** Suggests a person involved with a plane taking off.



**PRINCIPAL**

Circle the right palm-down *P* hand in a counter-clockwise direction over the back of the left flat hand.

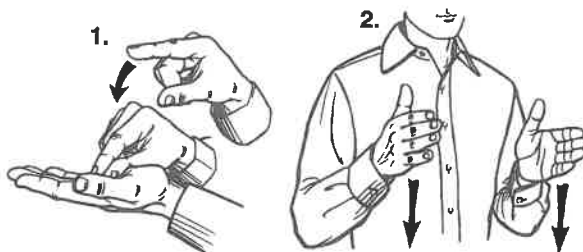
**Memory aid:** This is the basic movement of the sign for *over*, which indicates authority over others.



**CHEF, COOK (noun)**

Place first the palm side and then the back of the right flat hand on the upturned palm of the left flat hand. Add the sign for *person* (*personalizing word ending*).

**Memory aid:** Suggests a *chef* turning over food in a frying pan.



**PRINTER**

Move the right index finger and thumb together as though picking something up; then place them on the left flat palm. Add the sign for *person* (*personalizing word ending*).

**Memory aid:** Symbolizes a person who uses the old-fashioned method of hand-setting type.

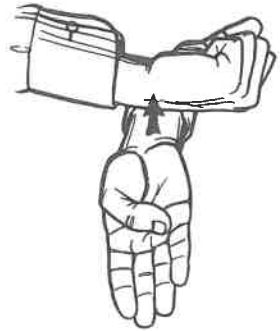


**BOSS, CHAIRMAN, OFFICER, CAPTAIN, GENERAL**

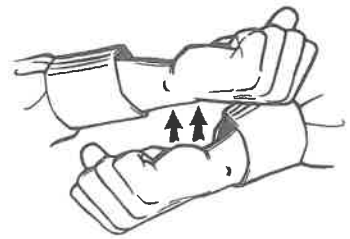
Touch the right shoulder with the fingertips of the curved right open hand. This is sometimes done with both hands on both shoulders.

**Memory aid:** Suggests the location of military shoulder bars, thus indicating authority.

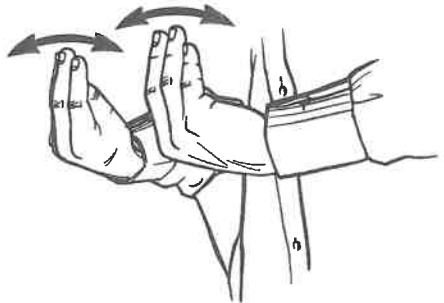
**BUSINESS**  
Strike the wrist of the right *B* hand on the down-turned wrist of the closed left hand a few times. The right *B* hand faces forward.  
**Memory aid:** The initial indicates the word, and the action suggests the sign for *work*.



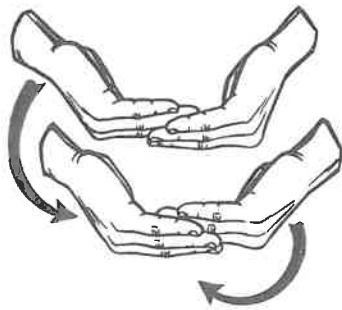
**WORK, JOB, LABOR, TASK**  
With the palms facing down, tap the wrist of the right *S* hand on the wrist of the left *S* hand a few times.  
**Memory aid:** Suggests the action of a hammer.



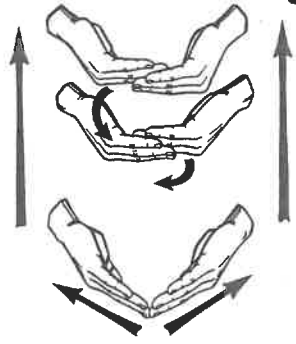
**SELL, SALE, STORE**  
Point both *and* hands down with bent wrists and pivot them in and out from the body a few times.  
**Memory aid:** Suggests holding up a cloth item for sale.



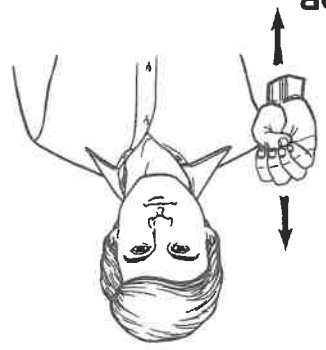
**BUILD, CONSTRUCT, ERECT**  
Place both bent hands to the front with palms down. Position the fingers of the hands one above the other alternately a few times.  
**Memory aid:** Suggests building blocks going up.

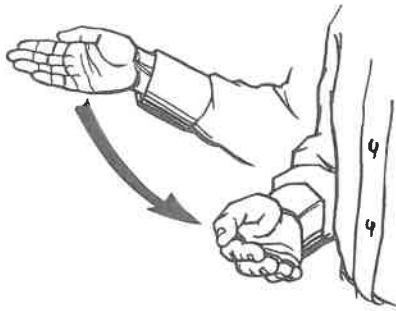


**BUILDING**  
Place both bent hands in front with palms down. Position the fingers one above the other alternately a few times. Form a triangle point at head level with both flat hands; move them apart and down simultaneously with fingers pointing up.  
**Memory aid:** Suggests the action of *building* and the shape of a house.



**ELEVATOR**  
Raise and lower the right *F* hand.  
**Memory aid:** The initial and movement of the sign suggest the meaning.

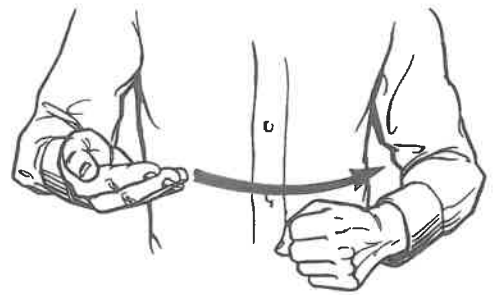




**HIRE, EMPLOY, INVITE**

Swing the right *H* or flat hand in toward the right side with palm facing up.

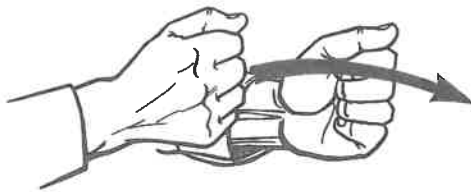
**Memory aid:** Suggests the idea of pulling someone in to oneself and supporting the person.



**FIRED, EXPELLED, DISCHARGED**

Sweep the upturned right flat hand across the top of the left closed hand from right to left.

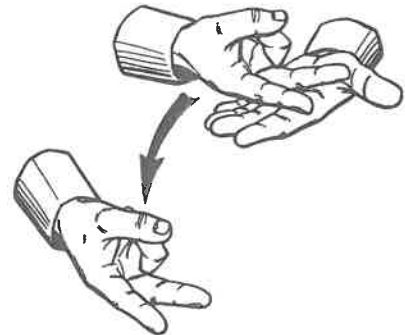
**Memory aid:** Suggests someone's head being cut off.



**PASS**

Pass the right *A* hand forward from behind the left *A* hand.

**Memory aid:** Represents the action of *passing*.



**FAIL**

Slide the back of the right *V* hand across the upturned left hand and go beyond and below the left fingertips.

**Memory aid:** The downward movement can suggest *failure*. Or, victory has fallen.



**MEMBER, BOARD, CONGRESS, SENATE, LEGISLATURE**

Place the right extended *M* fingers at the left shoulder and move them across to the right shoulder. Initialize each word.

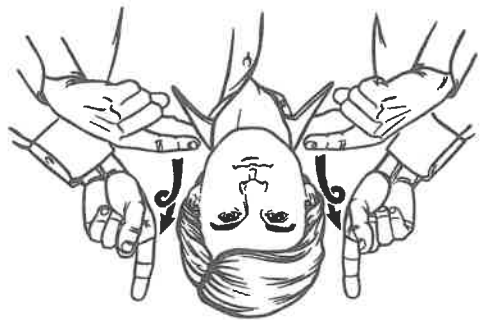
**Memory aid:** The initial suggests the word, and the shoulders symbolize authority.



**PROMINENT, CHIEF, MAIN**

Raise the right *A* hand above head level with the palm facing left.

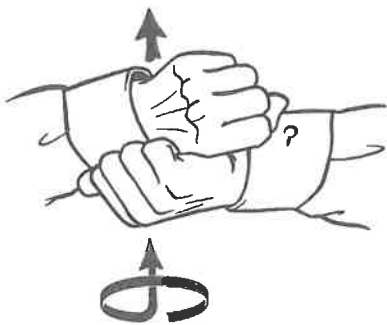
**Memory aid:** Points to a high elevation.



**SUCCESS, ACCOMPLISH, PROSPER, SUCCEED**

Point both index fingers toward each other or toward the head; then move them upward while simultaneously making little forward circles. End with both index fingers pointing up and palms facing forward.

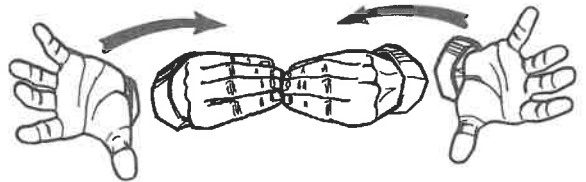
**Memory aid:** Suggests increasingly higher stages.



**APPOINTMENT, ENGAGEMENT, RESERVATION**

Circle the palm-down right A hand above the palm-in left S hand in a counterclockwise direction. Bring the right wrist down onto the left and move both hands down together a short distance.

**Memory aid:** Indicates a binding together of the hands in commitment.



**MEETING, ASSEMBLE**

Bring both open hands in from the sides while forming *and* hands, and let the fingertips touch.

**Memory aid:** The fingers symbolize individuals coming together.

**TALK, COMMUNICATE, CONVERSATION, DIALOGUE, INTERVIEW**

Move both index fingers back and forth from the lips alternately. Use initialzed hands for *commu-nicate, conversation, dialogue, and interview.*

**Memory aid:** Suggests the words coming and going in a conversation.



**SAY, MENTION, REMARK, SPEAK, SPEECH, STATE, TELL**

Make a small forward circular movement in front of the mouth with the right index finger.

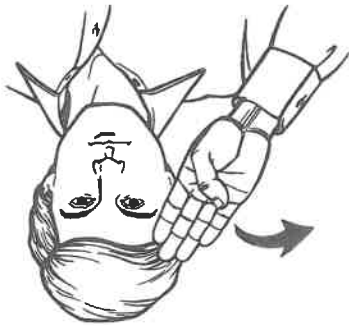
**Memory aid:** Suggests a flow of words from the mouth.

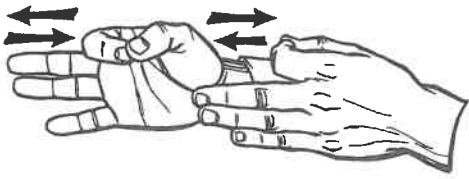


**HI, HELLO**

Move the right B hand in a small arc to the right from the forehead.

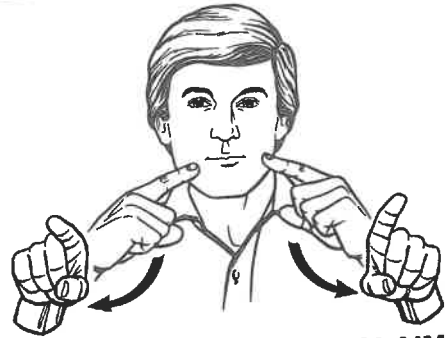
**Memory aid:** Similar to a salute.



**EXPLAIN, DEFINE, DESCRIBE**

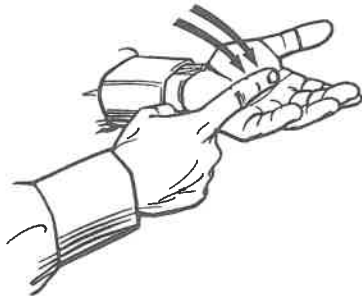
Point the extended fingers of both *F* hands forward with palms facing; then move the hands back and forth alternately. For added clarity the *D* hands may be used for *define* and *describe*.

**Memory aid:** The action seems to suggest that the hands are not sure which way to go until further *explanation* is given.

**ANNOUNCE, DECLARE, PROCLAIM**

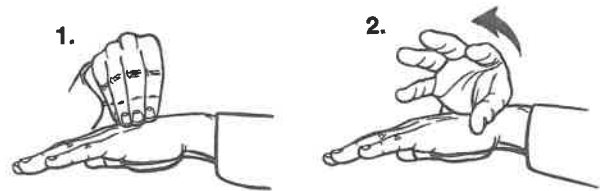
Touch the lips with both index fingers and swing them forward and to the sides.

**Memory aid:** Something is *proclaimed* from the mouth that expands to a wide group of hearers.

**DISCUSS**

Sign *discuss* by striking the left palm with the right index finger several times.

**Memory aid:** The movement is a common gesture used when one wishes to emphasize a point.

**ADVICE, ADVISE, COUNSEL**

Touch the back of the left flat hand with the fingertips of the right *and* hand. Form an open right hand while moving it forward across the left hand.

**Memory aid:** Suggests giving out information in many directions.

**EXPRESSION**

Move both *X* (or modified *A*) hands up and down alternately at the sides of the face.

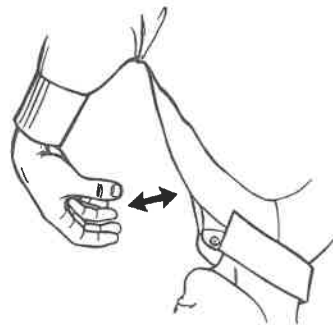
**Memory aid:** Suggests facial movements.

**EXAGGERATE**

Hold the left *S* hand in front of the chest with palm facing right. Place the right *S* hand in front of the left *S* hand and move it forward while pivoting it several times from the wrist.

**Memory aid:** The right hand seems to be stretching something held by the left hand.





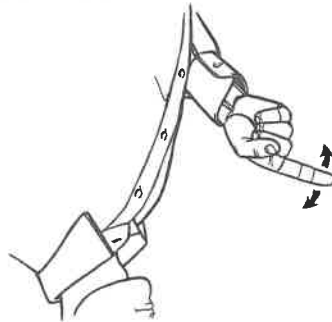
**COMPLAIN, GRIPE, GRUMBLE,**

**OBJECT, PROTEST**  
Strike the fingertips of the curved right hand sharply against the chest. Repeat a few times.  
**Memory aid:** Suggests the expression Something on his chest.



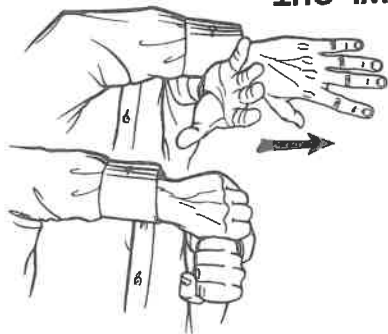
**SHOUT, CALL OUT, CRY OUT,**

**ROAR, SCREAM**  
Place either the right C or curved open hand in front of the mouth and move it forward and upward with a wavy motion.  
**Memory aid:** Suggests strong vibrations coming from the mouth.



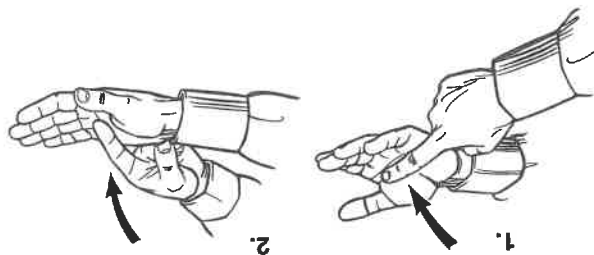
**SCOLD, REPRIMAND, TELL OFF**

Point the right index finger forward and shake it up and down.  
**Memory aid:** A common gesture for *reprimanding* someone.



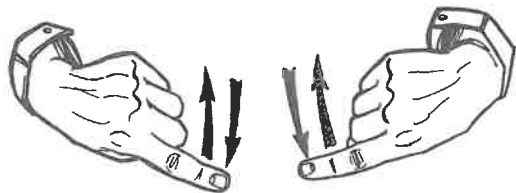
**BAWL OUT**

Place the little-finger edge of the right S hand over the thumb edge of the left S hand. Move both hands forward while quickly forming open hands that are crossed at the wrists.  
**Memory aid:** The fingers are thrust vigorously toward another person, representing a barrage of words.



**ARGUE, DISPUTE, DEBATE,**

**CONTROVERSY**  
First strike the left palm with the right index finger and then the right palm with the left index finger. Repeat several times.  
**Memory aid:** The movement suggests two sides or opposing opinions.



**QUARREL, ROW, SQUABBLE**

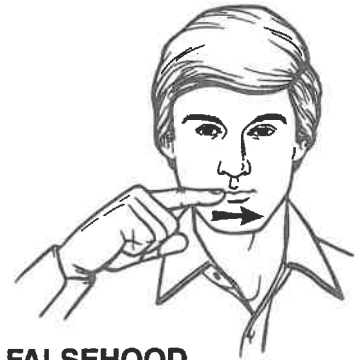
Point both index fingers toward each other in front of the chest and shake them up and down from the wrists. The hands are often moved parallel to one another, but some move them up and down alternately.  
**Memory aid:** The hands seem to be shooting at each other.



**GOSSIP**

Open and close the Q fingers and thumbs several times in front of the mouth.

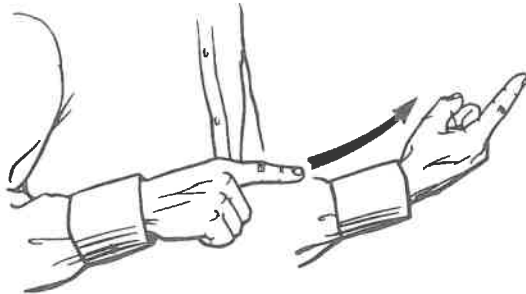
**Memory aid:** The fingers seem to be talking rapidly to each other.



**LIE, FALSEHOOD**

Point the right index finger to the left and move it horizontally across the lips from right to left.

**Memory aid:** Symbolizes the idea that spoken truth is diverted from its normally straight course.



**INSULT**

Move the right index finger forward and up with a slight twist.

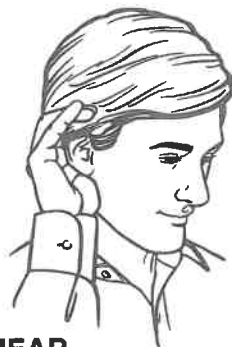
**Memory aid:** The hand symbolizes a sword that is used to injure an opponent.



**COMMAND, ORDER**

Point the right index finger to the mouth and then move it forward and slightly down with considerable emphasis. The index finger ends pointing forward.

**Memory aid:** Suggests strong words coming from the mouth.



**LISTEN, HEAR**

Place the cupped right hand behind the right ear and turn the head a little to the left.

**Memory aid:** The sign is a natural gesture.



**THANKS, THANK YOU, YOU'RE WELCOME**

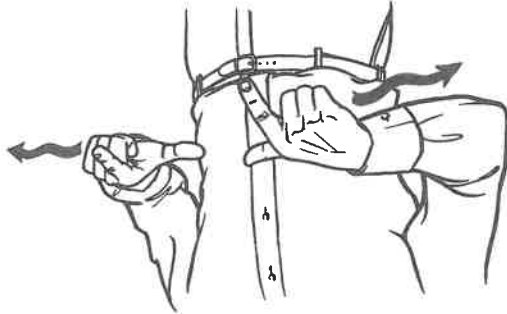
Touch the lips with the fingertips of one or both flat hands, then move the hands forward until the palms are facing up. It is natural to smile and nod the head while making this sign.

**Memory aid:** A natural expression of affection used when one is grateful.

**AUDIOLOGY**  
 Circle the right A hand in a forward circle at the right ear.  
**Memory aid:** The initial indicates the word, and the action suggests a continuing emphasis on the ear.



**LANGUAGE, TONGUE**  
 Point both L hands toward each other (sometimes the index fingers point up), and move them to the sides with a twisting motion from the wrists.  
**Memory aid:** The L hands indicate the word, and the action is similar to that of the sign for *sentence*.



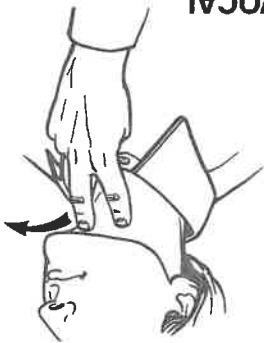
**WHISPER**  
 Hold the slightly curved right hand over the right side of the mouth, and lean slightly forward or to the side.  
**Memory aid:** The slightly cupped hand projects the *whisper* to its intended receiver.



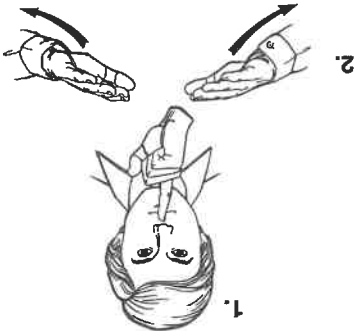
**SPEECH, ADDRESS, LECTURE, TESTIMONY**  
 Pivot the slightly curved right hand forward and backward several times from an upright position at the front and right of the head.  
**Memory aid:** A speaker's common gesture.

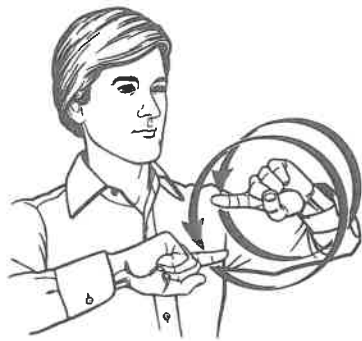


**VOICE, VOCAL**  
 Draw the back of the right V fingers up the neck and forward under the chin.  
**Memory aid:** The initial indicates the word, and the action shows the location.



**QUIET, CALM, PEACEFUL, SERENE, SILENT, STILL, TRANQUIL**  
 Touch the lips with the right index finger and move both flat hands down and to the sides with palm facing down.  
**Memory aid:** These are gestures that indicate *silence and peace*.

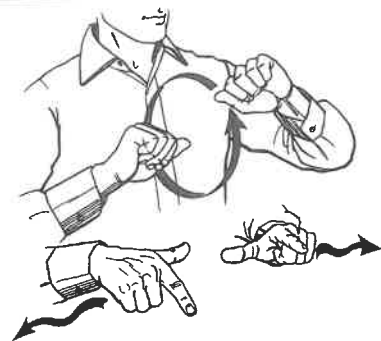




**SIGN (language)**

Hold both index fingers to the front with the fingers pointing toward each other and the palms facing out. Rotate both index fingers alternately toward the body.

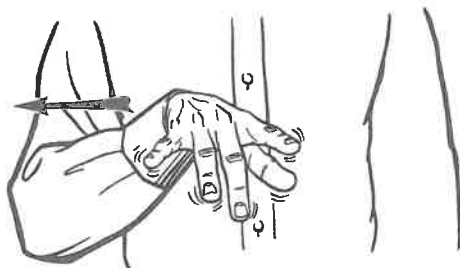
**Memory aid:** Symbolizes the necessary moving of the hands to engage in *sign* language.



**AMESLAN (American Sign Language)**

Rotate both *A* hands alternately toward the body with palms facing forward. Then point both *L* hands toward each other and move them to the sides with a twisting motion from the wrists.

**Memory aid:** The first part of the movement is the sign for *signs*, and the second part is the sign for *language*.



**FINGERSPELLING, ALPHABET, SPELL, DACTYLOLOGY, MANUAL ALPHABET**

With palm facing down, wiggle the fingers of the right flat open hand as the hand moves along a horizontal line to the right.

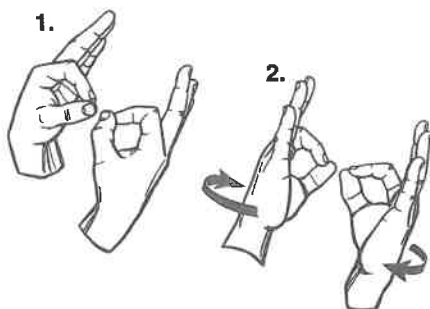
**Memory aid:** Emphasizes the use of fingers in *fingerspelling*.



**LIPREADING, ORAL, SPEECHREADING**

Hold the right curved *V* fingers at the mouth. Move around the mouth in a counterclockwise direction.

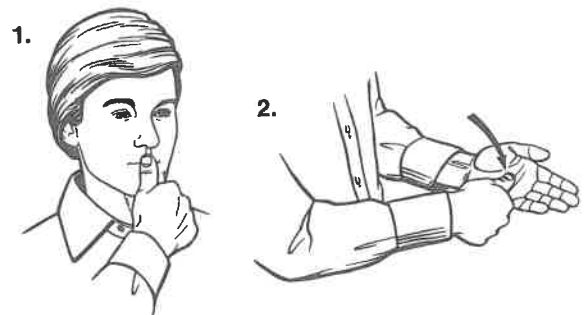
**Memory aid:** The initial and location indicate the voice.



**INTERPRET, REVERSE INTERPRET, TRANSLATE**

Make *F* hands, palms facing, and left palm forward; then reverse hands. *Reverse interpret:* Use *R* hands with reverse action of *interpret*, and follow with the sign for *interpret*. *Translate:* Use *T* hands and the same movement for *interpret*.

**Memory aid:** Changing positions suggests changing languages.



**LETTER, MAIL**

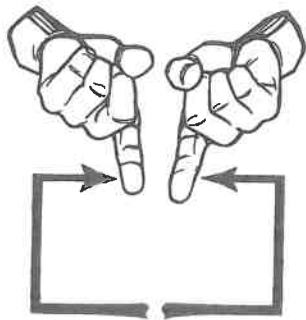
Place the right *A* thumb on the mouth and then on the palm of the upturned left hand.

**Memory aid:** Suggests moistening a stamp and placing it on an envelope.

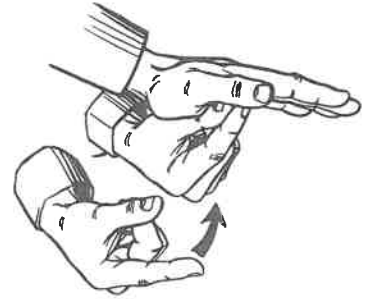
**MAGAZINE, BOOKLET, BROCHURE, CATALOG, LEAFLET, MANUAL, PAMPHLET**  
 Move the right thumb and index finger along the little-finger edge of the left hand. The direction of this movement varies in different locations.  
**Memory aid:** Suggests the thinness of a *magazine*.



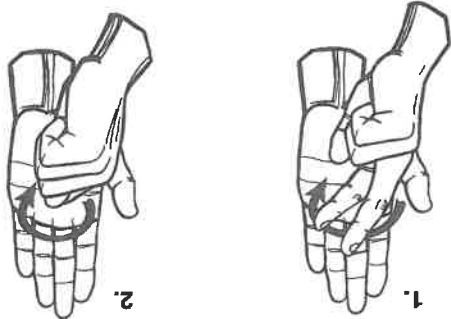
**POSTER, SIGN**  
 Hold both index fingers up with palms facing forward and outline a square.  
**Memory aid:** Suggests the shape of a *poster*.



**NEWSPAPER, PRINTING, PUBLISHING**  
 Move the right index finger and thumb together as though picking something up; then place them on the left flat palm.  
**Memory aid:** Symbolizes the old-fashioned method of hand-setting type.



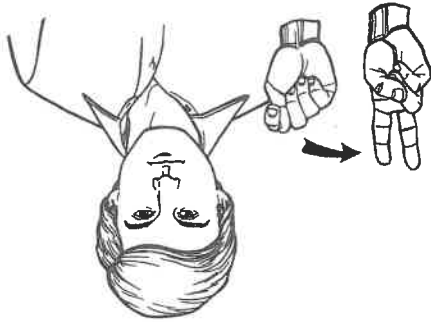
**VIDEOTAPE**  
 Rotate the thumb side of the right V hand in a clockwise circle on the left palm which is facing right. Make the same movement with the right T hand on the left flat palm.  
**Memory aid:** The initialized movement suggests the sign.

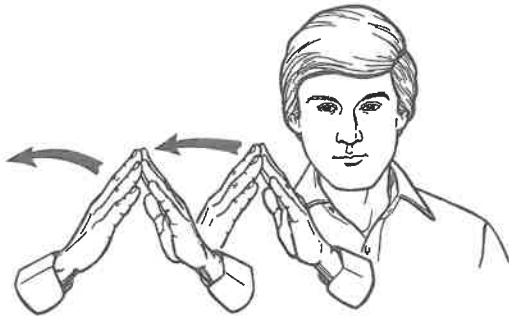


**RADIO**  
 Cup both hands over the ears.  
**Memory aid:** Suggests the use of *radio* headphones.

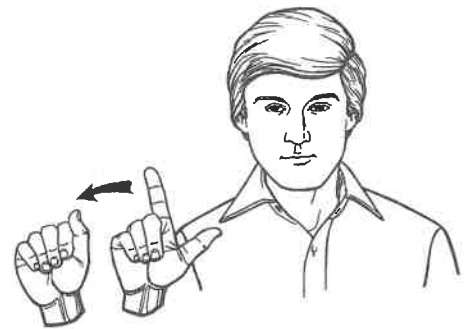


**TELEVISION**  
 Fingerspell T-V.  
**Memory aid:** The initials indicate the word.

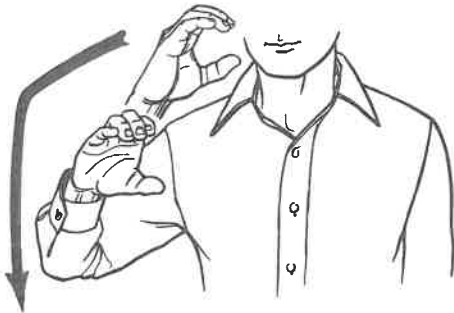




**CITY, COMMUNITY, TOWN, VILLAGE**  
 Make the point of a triangle with both flat hands in front of the chest. Repeat a few times while moving the hands to the right.  
**Memory aid:** Symbolizes the roofs of many houses.



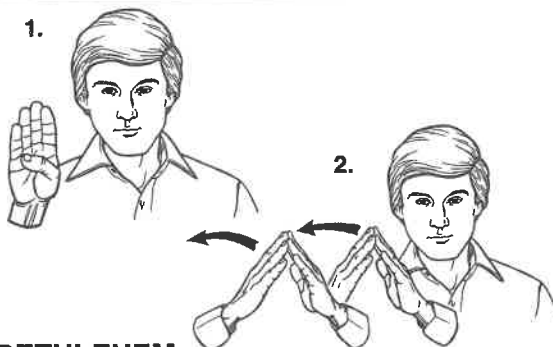
**LOS ANGELES**  
 Fingerspell L-A.  
**Memory aid:** The initials combined with the context and simultaneous lipreading indicate the meaning.



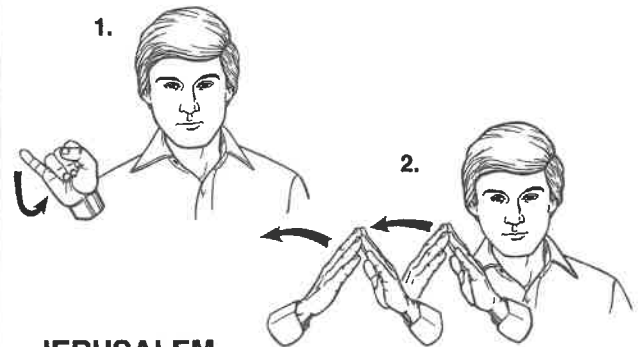
**CHICAGO**  
 Move the right *C* hand to the right from just above shoulder level; then move it downward a short distance. Some use a slight wavy motion for the downward movement.  
**Memory aid:** The downward movement can symbolize the changing directions of wind. *Chicago* is known as the "windy city."



**BOSTON**  
 Place the *B* hand near the right shoulder with the palm facing forward, and then make a few short downward movements.  
**Memory aid:** The initial indicates the word, which requires context and simultaneous lipreading for full comprehension.



**BETHLEHEM**  
 Fingerspell the word, or sign *B* followed by the sign for *city*. *City* is signed by making the point of a triangle with both flat hands in front of the chest. This is repeated a few times while moving the hands to the right.  
**Memory aid:** The initial followed by the sign for *city* indicates the meaning.



**JERUSALEM**  
 Fingerspell the word, or sign *J* followed by the sign for *city*. *City* is signed by making the point of a triangle with both flat hands in front of the chest. This is repeated a few times while moving the hands to the right.  
**Memory aid:** The initial followed by the sign for *city* indicates the meaning.

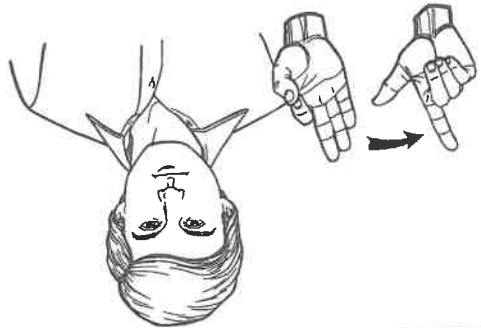
**STATE (geographical)**  
 Place the index-finger side of the right S hand near the top of the left flat hand, which has its palm facing forward. Move the right S hand in a downward arc to the base of the left hand.  
**Memory aid:** The initial combined with context indicates the word.



**CALIFORNIA**  
 Touch the right ear with the right index finger, or grasp the right earlobe between the right index finger and thumb. Shake the right Y hand as it moves down and forward.  
**Memory aid:** Suggests both the idea of earrings and the color of gold.



**FLORIDA**  
 Fingerspell F-L.  
**Memory aid:** The first two letters of the word are initialized. Context and simultaneous lipreading are required for full comprehension.



**HAWAII**  
 Make a counterclockwise circle with the right H hand in front of the face with the palm facing self.  
**Memory aid:** The initial suggests the word, which requires context and simultaneous lipreading for full comprehension.



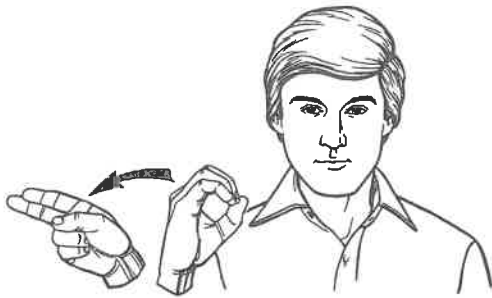
**NEW YORK**  
 Place the right Y hand on the left flat hand and slide it back and forth.  
**Memory aid:** The initial combined with the context indicates the name, and the movement suggests the busy atmosphere of a large city.



**ARIZONA**  
 Slide the right A hand thumb from right to left across the chin with palm facing left.  
**Memory aid:** The word "Arizona" means "little spring place." The movement and location of this sign are similar to those for dry.





**OHIO**

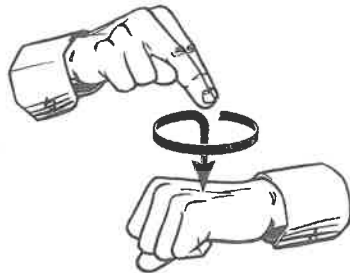
Fingerspell O-H.

**Memory aid:** The initials indicate the first two letters of the word, which requires context and simultaneous lipreading for full comprehension.

**COUNTRY (national territory)**

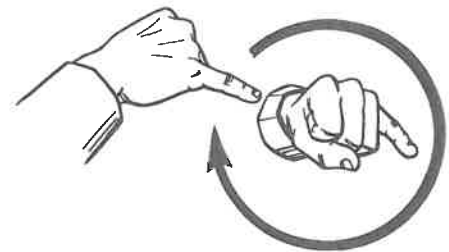
Rub the palm side of the right *Y* hand in a counterclockwise direction on the underside of the left forearm near the elbow.

**Memory aid:** Can suggest a patriotic willingness to wear out one's elbow for one's *country*.

**NATION, NATIONAL, NATURE, NATURAL**

Make a clockwise circle above the back of the left *S* hand with the right extended *N* fingers; then bring the *N* fingers down on the back of the left hand.

**Memory aid:** The initial indicates the word, and the action suggests something that is established on a solid foundation.

**INTERNATIONAL**

Point the little finger of the left *I* hand forward with the palm facing down. With the palm facing down, rotate the right *I* hand forward around the left *I* hand.

**Memory aid:** The initial indicates the word, and the action suggests the idea of something that goes around the world.

**FOREIGN**

Rub the index finger and thumb side of the right *F* hand in a few counterclockwise circles on the underside of the left forearm near the elbow.

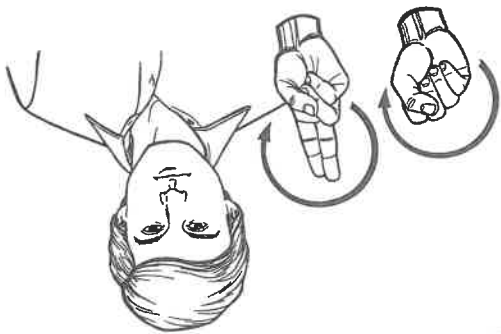
**Memory aid:** The initial indicates the word, and the action is the same as that for *country*.

**EUROPE, EUROPEAN**

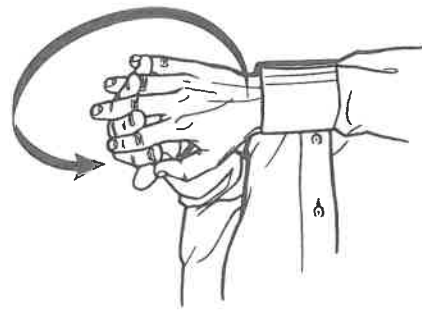
The right *E* hand moves in a small clockwise circle, with palm out, at the right side of the head. Add the sign for *person* (*personalizing word ending*) when signing *European* with reference to a person.

**Memory aid:** The initial indicates the word, and the movement suggests many countries.

**UNITED STATES**  
 With one flowing movement make a three-quarter counterclockwise circle with the right U hand, repeating the movement with the right S hand as the hand moves to the right.  
**Memory aid:** The initials indicate the words, which require context and simultaneous lipreading for full comprehension.



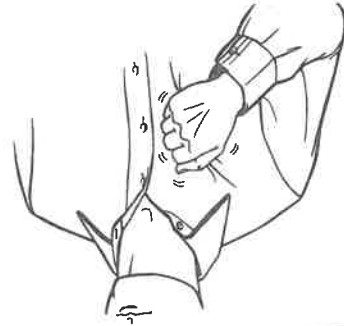
**AMERICA, AMERICAN**  
 Interlock the fingers of both slightly curved open hands and move them from right to left in an outward circle. For American add the sign for person (personalized word ending) in reference to a person.  
**Memory aid:** The interlocked fingers suggest the log fences made by America's early settlers.



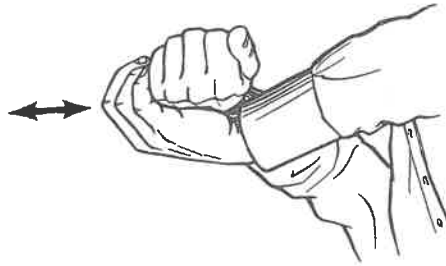
**MEXICO, MEXICAN**  
 Draw the right extended M fingertips downward over the right cheek a few times. Add person (personalized word ending) when signing Mexican with reference to a person.  
**Memory aid:** The initial of the sign indicates the word, and the actions of the sign suggest Pancho Villa's whiskers.



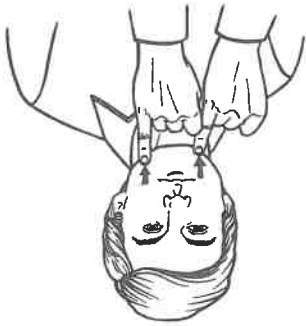
**CANADA, CANADIAN**  
 Grasp the right jacket or coat lapel (or an imaginary one) and shake it. Add person (personalized word ending) when signing Canadian with reference to a person.  
**Memory aid:** Suggests shaking snow from one's coat.



**ENGLAND, ENGLISH**  
 Grasp the outer edge of the left closed hand at the wrist with the curved right hand, and move both hands back and forth. Add person (personalized word ending) when signing English with reference to a person.  
**Memory aid:** Symbolizes that England once ruled much of the world with a firm hand.



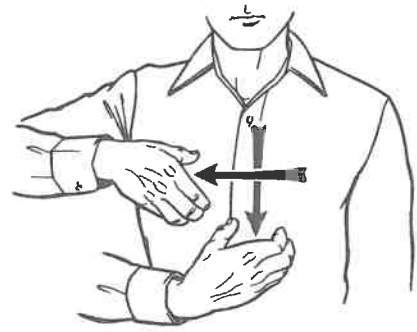
**ISRAEL, ISRAELI**  
 Using the palm side of the right I finger, stroke downward at each side of the chin. Add the sign for person (personalizing word ending) when signing Israeli with reference to a person.  
**Memory aid:** The initial indicates the word, and the action suggests the stroking of the beard, and traditionally worn by Hasidic Jews.



**GERMANY, GERMAN**

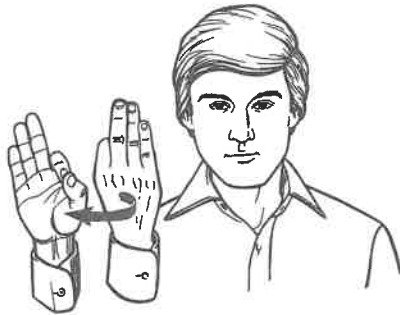
Cross the hands at the wrists with palms facing the body and wiggle the fingers. Add the sign for *person* (*personalizing word ending*) when signing *German* with reference to a person.

**Memory aid:** Reminds one of the double eagle emblem of the old German empire.

**SWITZERLAND**

Draw a cross on the chest with the right *C* hand.

**Memory aid:** Reminds one of the cross on a Swiss flag.

**FRANCE, FRENCH**

With the right palm facing the right shoulder, flick or twist the *F* hand until the palm faces forward. Add the sign for *person* (*personalizing word ending*) when signing *French* with reference to a person.

**Memory aid:** A French chef's sign of approval of a meal well prepared.

**EGYPT, EGYPTIAN**

With the right palm forward, form a *C* shape with the index finger and thumb and place it on the forehead. Add the sign for *person* (*personalizing word ending*) when signing *Egyptian* with reference to a person.

**Memory aid:** The *C* shape resembles the crescent on a Moslem flag.

**AFRICA, AFRICAN**

Make a counterclockwise circle in front of the face with the right *A* hand. The palm faces left. Add the sign for *person* (*personalizing word ending*) when signing *African* with reference to a person.

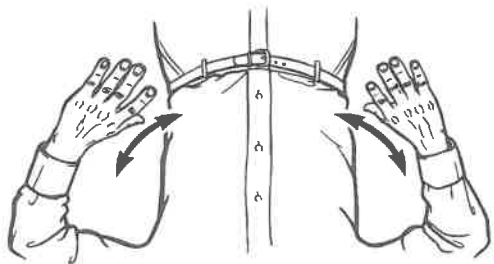
**Memory aid:** The initial indicates the word, which requires context and simultaneous lipreading for full comprehension.

**INDIA, INDIAN**

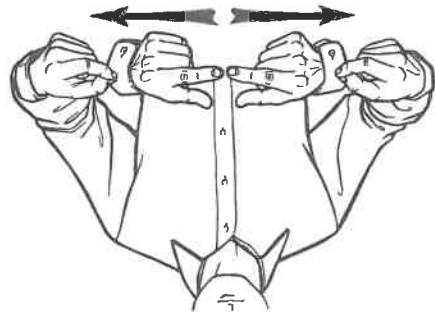
With palm facing left, place the tip of the *A* thumb on the center of the forehead and twist slightly. Add the sign for *person* (*personalizing word ending*) when signing *Indian* with reference to a person.

**Memory aid:** Touching the forehead reminds one of the red dot some *Indian* women wear.

**RUSSIA, RUSSIAN**  
 Tap the flat open hands, palms down, on the sides of the waist a few times. Add the sign for *person* (*personalizing word ending*) when signing *Russian* with reference to a person.



**JAPAN, JAPANESE**  
 Point the extended fingers of both G hands toward each other and pull them to the sides of the body while closing G hands. Add the sign for *person* (*personalizing word ending*) when signing *Japanese* with reference to a person.



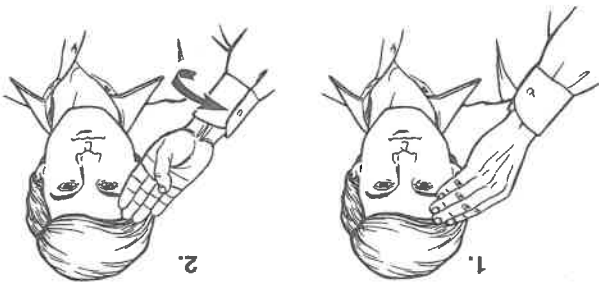
**CHINA, CHINESE**  
 Touch the left side of chest then right side of chest with the extended right index finger, palm facing body, then move index finger straight down. Add the sign for *person* (*personalizing word ending*) when signing *Chinese* with reference to a person.

**Memory aid:** Suggests the shape of *Chinese* military uniforms.



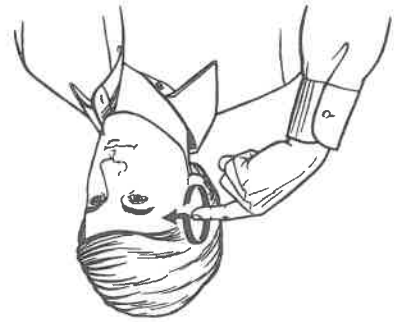
**AUSTRALIA, AUSTRALIAN**  
 Touch right side of forehead with the fingertips of the right flat hand, palm in; twist hand, palm out, with the fingertips again touching the forehead. Add *person* (*personalizing word ending*) when signing *Australian* with reference to a person.

**Memory aid:** Suggests the wide upturned brim of the traditional *Australian* bush hat.



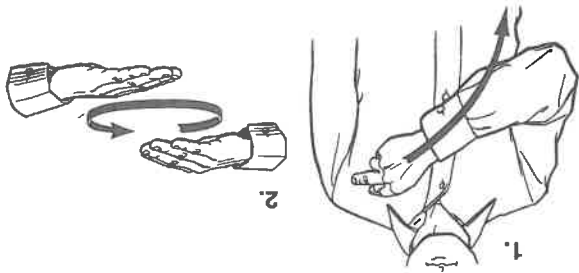
**GOVERNMENT, CAPITAL, FEDERAL, POLITICS**  
 With the right index finger at the right temple, make a small forward circle; then place the index finger on the temple. An initialized hand may be used for *capital, federal, and politics*.

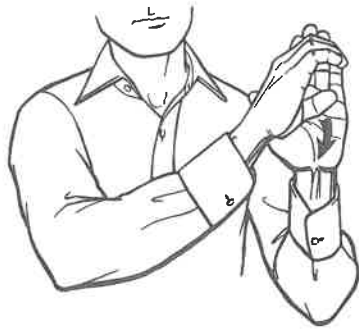
**Memory aid:** Pointing to the head symbolizes the authority of government.



**KINGDOM**  
 Move the right K hand from the left shoulder to the right waist; then circle the right flat hand over the left hand in a counterclockwise direction.

**Memory aid:** A combination of the signs for *king* and *over*.

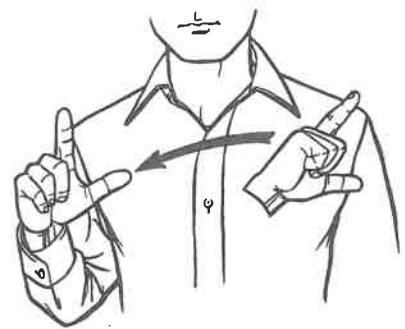




**CONSTITUTION, PARLIAMENTARY, PRINCIPLES**

Place the right *C* hand on the palm-forward left hand near the top; then move it downward in an arc until it rests at the base of the left hand. *Note:* Initialize each word individually.

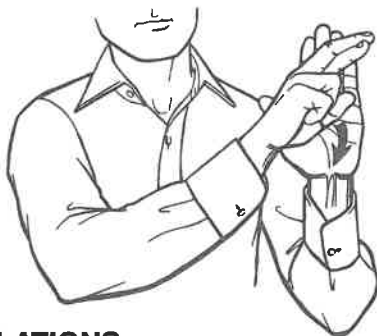
**Memory aid:** The right hand seems to be pointing out written *rules* on a printed page.



**LEGISLATION**

Place the thumb of the right *L* hand first on the left shoulder and then on the right.

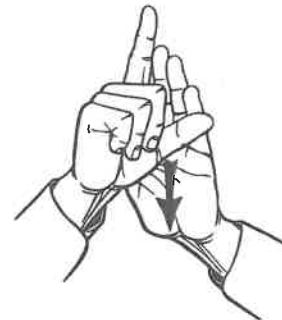
**Memory aid:** Can suggest the idea that when *legislation* is passed, the weight of government's shoulders is behind it.



**REGULATIONS**

Place the index and thumb side of the right *R* hand on the front of the palm-forward left hand near the top; then move it downward in an arc until it rests at the base of the left hand.

**Memory aid:** The right hand seems to be pointing out written *rules* on the left hand, which can represent the printed page.



**LAW**

Place the index and thumb side of the right *L* hand on the front of the palm-forward left hand. Begin near the top; then move the right hand downward in a small arc to the base of the left hand.

**Memory aid:** The right hand seems to be pointing out written *laws* on a printed page.



**RULES**

Move the right *R* fingers in a downward arc from the fingertips to the base of the palm of the left flat hand.

**Memory aid:** The left hand can represent a printed page upon which rules are written.

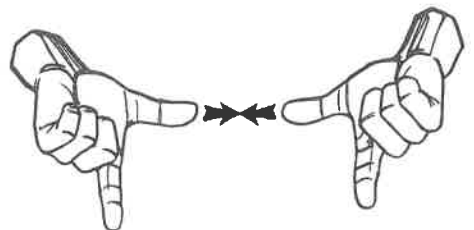


**TESTAMENT, WILL (legal statement)**

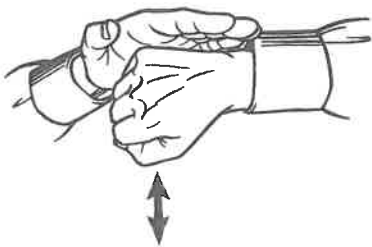
Place the index side of the right *T* hand on the front of the palm-forward left hand near the top, then move it downward in a small arc to the base of the left hand. Use the right *W* hand for *will*.

**Memory aid:** The right hand seems to be drawing attention to a written statement.

**LICENSE, CERTIFICATE**  
 Touch the thumb tips of both L hands together a few times with palms facing forward. The C hands may be used for *certificate*.  
**Memory aid:** Uses both the initial and the shape.



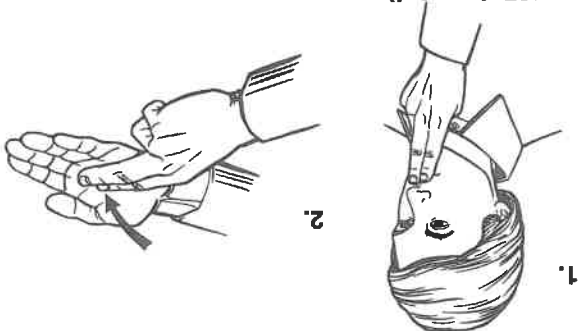
**SEAL, STAMP**  
 Drop the right S hand sharply into the left flat palm and raise it again.  
**Memory aid:** Suggests the use of a rubber stamp.



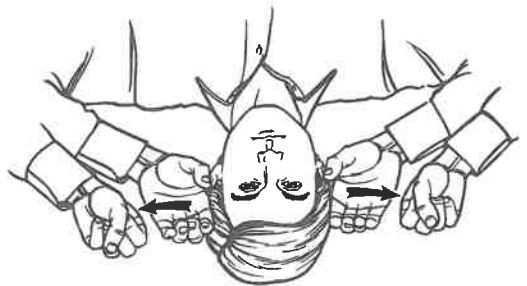
**FLAG, BANNER**  
 Place the right elbow in the left hand and wave the right hand back and forth.  
**Memory aid:** Suggests a flag waving on a pole.



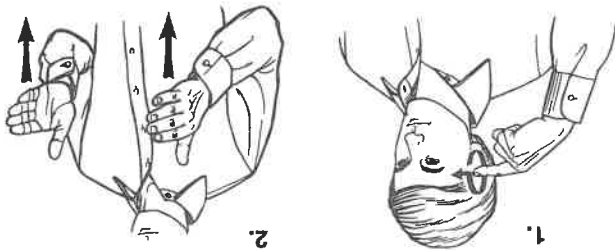
**STAMP (postal)**  
 With the palm facing in, touch the lips with the right U fingers; then place them with palm facing down on the left palm.  
**Memory aid:** Symbolizes moistening a stamp and sticking it on an envelope.

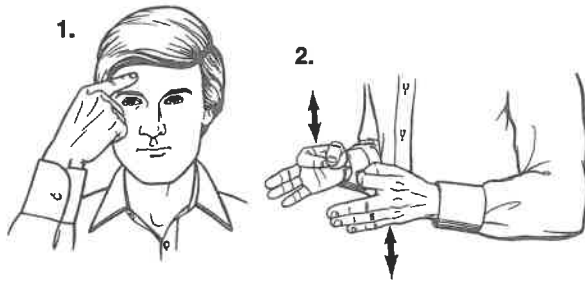


**PRESIDENT, SUPERINTENDENT**  
 Hold both C hands at the temples with palms facing forward. Change to the S position as the hands are moved upward and outward.  
**Memory aid:** Suggests the outline of horns symbolizing authority.



**GOVERNOR**  
 With the right index finger at the right temple, make a small forward circle; then place the index finger on the temple. Add the sign for person (*personalizing word ending*).  
**Memory aid:** Pointing to the head symbolizes the authority of government.

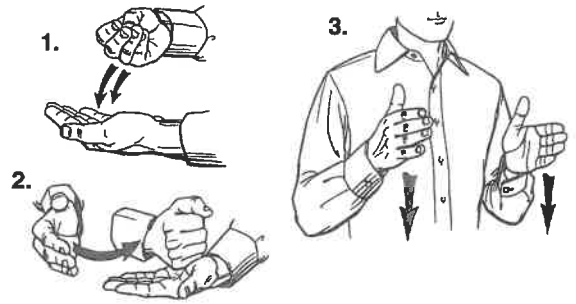




**JUDGE, COURT, JUDGMENT, JUSTICE, TRIAL**

Touch the forehead with the right index finger and form two *F* hands with palms facing. Move the hands up and down alternately.

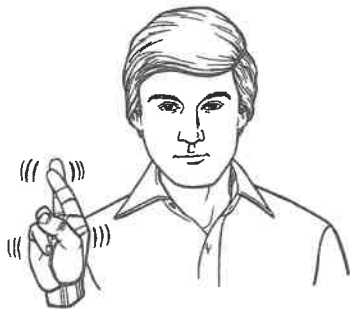
**Memory aid:** Suggests that the mind is weighing the evidence.



**TREASURER**

Bring the back of the *and* hand down onto the palm of the left flat hand a few times. Scoop the right hand from the fingertips to the heel of the left flat hand. Bring both flat hands down simultaneously with palms facing.

**Memory aid:** A combination of *money, collection, and person (personalizing word ending)*.



**REPUBLICAN**

Hold up the right *R* hand and shake it.

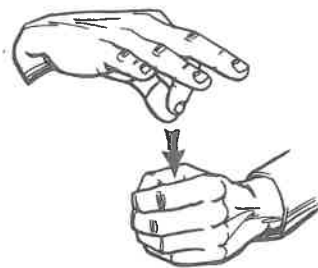
**Memory aid:** The initial suggests the word, which requires context and simultaneous lipreading for full comprehension.



**DEMOCRAT**

Hold up the right *D* hand and shake it.

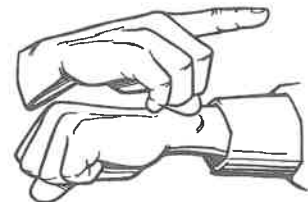
**Memory aid:** The initial suggests the word, which requires context and simultaneous lipreading for full comprehension.



**VOTE, ELECT, ELECTION**

Place the thumb and index finger of the downturned right *F* hand into the left *O* hand.

**Memory aid:** Suggests placing a ballot in a box.



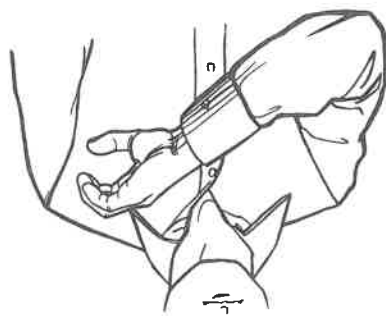
**DUTY**

Strike the wrist of the downturned left *S* hand with the right *D* hand a few times.

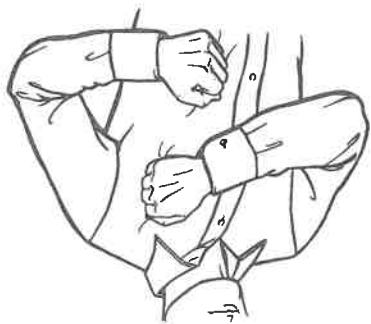
**Memory aid:** The position can suggest binding the hands and thus the idea of being bound by *duty*.



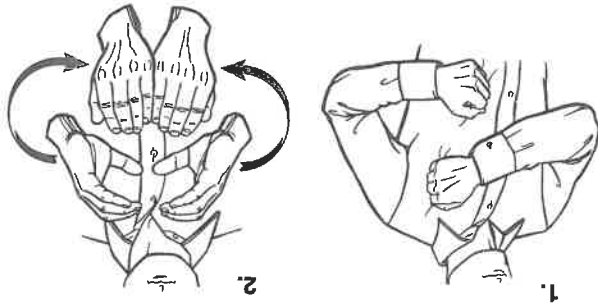
**POLICE, COP, SHERIFF**  
 Place the thumb side of the right C hand at the left shoulder.  
**Memory aid:** The position at the shoulder indicates those who bear responsibility and authority.



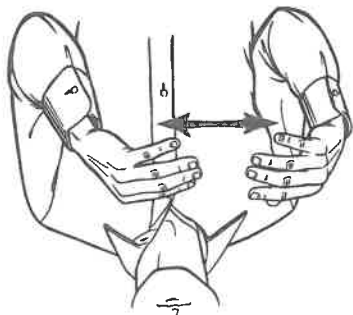
**SOLDIER, ARMS**  
 Place the palm side of the right A hand just below the left shoulder and the palm side of the left A hand several inches below the right hand.  
**Memory aid:** Symbolizes a soldier holding a rifle at the left shoulder.



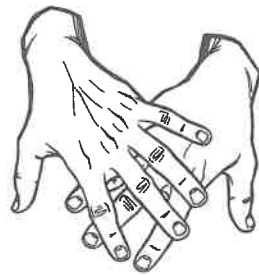
**ARMY, MILITARY**  
 Place palm side of right A hand just below left shoulder and palm side of left A hand several inches below right hand. Then hold both C hands upright before the chest with palms facing. Move hands outward in a circle until little fingers touch.  
**Memory aid:** A combination of the signs for soldier and group.



**BATTLE, WAR**  
 Hold both open bent hands at chest level with fingertips pointing toward each other. Move both hands simultaneously to the left and then to the right a few times.  
**Memory aid:** Suggests the advance and retreat of military forces.



**PRISON, BARS, PENITENTIARY**  
 With palms facing in, cross the four fingers of the right B hand across the four fingers of the left B hand.  
**Memory aid:** Symbolizes the bars of a prison.



**SENTENCE**  
 Touch the thumb and index fingers of each F hand in front of the chest. Pull the hands apart to the sides, either with a straight or wavy motion.  
**Memory aid:** Suggests that words linked together stretch out to form a sentence.

