



FATHER, DAD

Touch the forehead with the thumb of the right open hand. The fingers may be wiggled slightly.

Memory aid: Indicates the head male of the family unit.



MOTHER, MOM, MAMA

Touch the right chin or cheek with the thumb of the right open hand. The fingers may be wiggled slightly. The sign for *mama* is similar except that the thumb touches the cheek several times.

Memory aid: Indicates the head female of the family unit.



GRANDFATHER

Touch the forehead with the thumb of the right open hand which has its palm facing left. Move the right hand in two forward arcs.

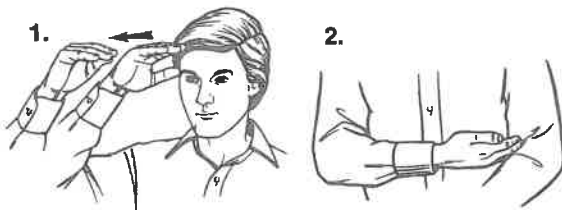
Memory aid: The combination of the sign for *father* and the double hand movements of both signs suggest the reference to someone of the older generation.



GRANDMOTHER

Touch the chin with the thumb of the right open hand which has its palm facing left. Move the right hand in two forward arcs.

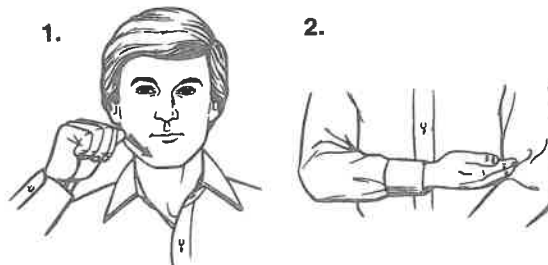
Memory aid: The combination of the sign for *mother* and the double hand movements of both signs suggest the reference to someone of the older generation.



SON

Move the right hand to the forehead as though gripping the peak of a hat between the fingers and thumb; then move it forward a few inches. Next move the right flat hand with palm facing up into the crook of the bent left elbow.

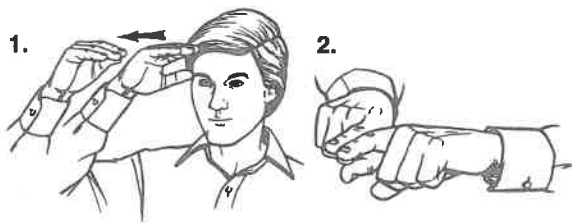
Memory aid: Indicates a male baby cradled in the arms.



DAUGHTER

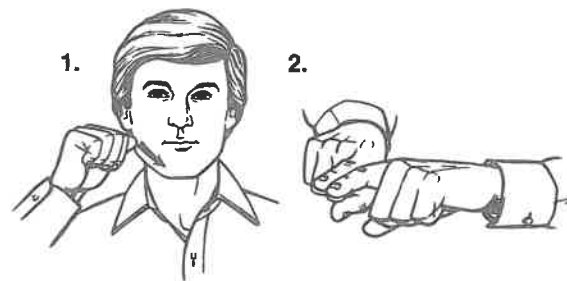
Trace the right jawbone from ear to chin with the palm side of the right *A* thumb. Then move the right flat hand with palm facing up into the crook of the bent left elbow.

Memory aid: Indicates a female baby cradled in the arms.

**BROTHER**

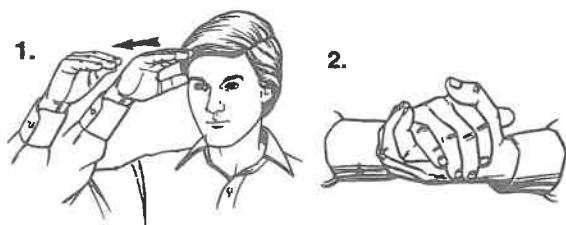
Move the right hand to the forehead as though gripping the peak of a hat between the fingers and thumb; then move it forward a few inches. Next, point both index fingers forward and bring them together. The latter is the sign for *same*.

Memory aid: The two signs combined suggest a male of the same family.

**SISTER**

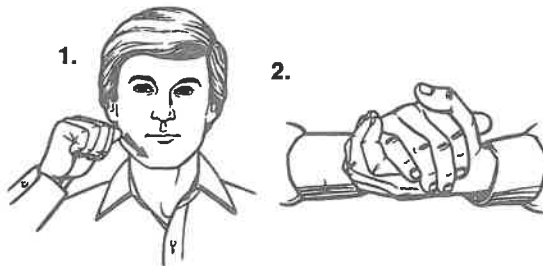
Trace the right jawbone from ear to chin with the palm side of the right *A* thumb. Then point both index fingers forward and bring them together. The latter movement is the sign for *same*.

Memory aid: The two signs combined suggest a female of the same family.

**HUSBAND**

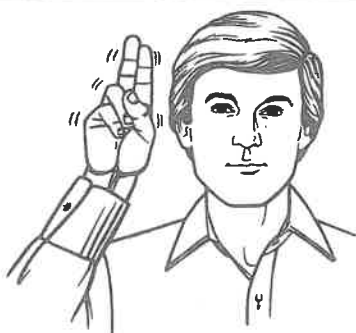
Move the right hand to the forehead as though gripping the peak of a hat between the fingers and thumb; then move it forward a few inches. Clasp the hands with the right hand above the left. The latter position is the sign for *marriage*.

Memory aid: Indicates a married male.

**WIFE**

Trace the right jawbone from ear to chin with the palm side of the right *A* thumb. Then clasp the hands in a natural position with the right hand above the left. The latter is the sign for *marriage*.

Memory aid: Indicates a married female.

**UNCLE**

With the palm facing forward, place the right *U* hand close to the right temple and shake back and forth from the wrist.

Memory aid: The initial *U* is placed near the *male* sign position.

**AUNT**

Place the right *A* hand close to the right cheek and shake back and forth from the wrist.

Memory aid: The initial *A* is placed near the *female* sign position.



NEPHEW

Place the right extended *N* fingers close to the right temple and shake back and forth from the wrist.

Memory aid: The initial *N* is placed near the male sign position.



NIECE

Place the right extended *N* fingers close to the right side of the chin and shake back and forth from the wrist.

Memory aid: The initial *N* is placed near the female sign position.



PARENTS

Place the middle finger of the right *P* hand at the right temple, then at the right side of the chin.

Memory aid: The initial indicates the word, and the two locations refer to the basic male and female positions.

1.



2.



FAMILY

Place both upright *F* hands to the front with the palms facing each other. Make an outward circular movement with each hand simultaneously until the little fingers touch.

Memory aid: The two *F* hands describe the circle of a family.



COUSIN

Place the right *C* hand either close to the right temple for a male or close to the right cheek for a female; then shake back and forth from the wrist. Place between the *male* and *female* positions for neuter reference.

Memory aid: The initial *C* is placed wherever appropriate.



IN-LAW

Place the index and thumb side of the right *L* hand on the front of the palm-forward left hand. Begin near the top; then move the right hand downward in a small arc to the base of the left hand. Some prefer to sign *in* first.

Memory aid: This is the sign for *law*.



MAN

Touch the thumb of the right open hand on the forehead, then on the chest.

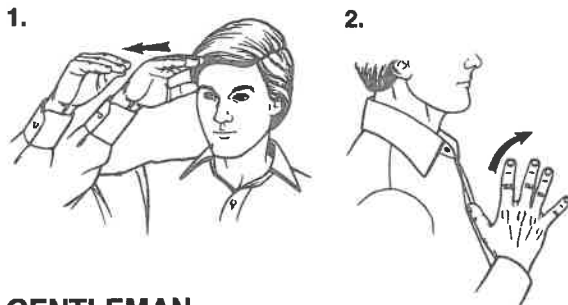
Memory aid: This sign is a combination of *father* and *fine*.



WOMAN

Touch the thumb of the right open hand on the chin, then on the chest.

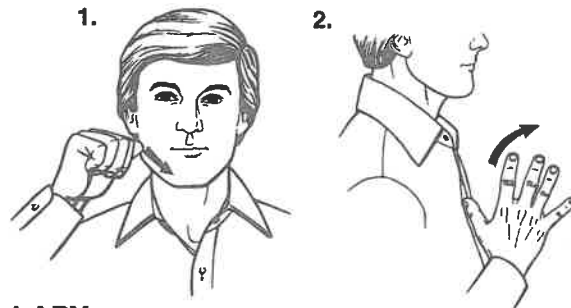
Memory aid: The sign is a combination of *mother* and *fine*.



GENTLEMAN

Move the right hand to the forehead as though gripping the peak of a hat between the fingers and thumb; then move it forward a few inches. Place the right thumb of the right open hand on the chest with palm facing left, then tilt the hand in a slight up-forward-down movement.

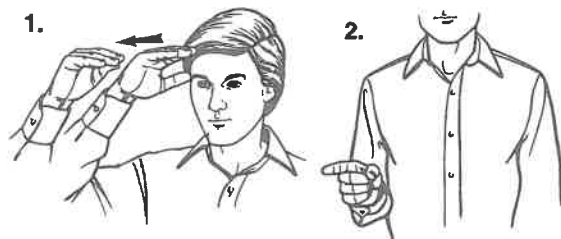
Memory aid: Old-fashioned tipping of hat.



LADY

Trace the right jawbone from ear to chin with the palm side of the right A thumb. Then place the right thumb of the right open hand on the chest with palm facing left; then tilt the hand in a slight up-forward-down movement.

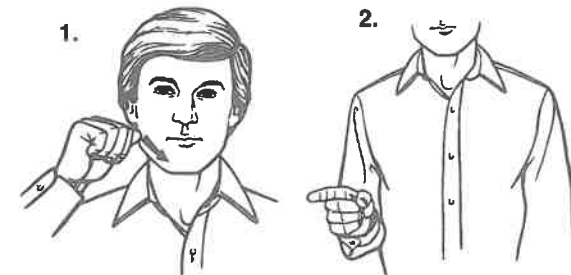
Memory aid: Indicates a *lady's* dress or blouse with frilly ruffles.



HE, HIM

Move right hand to forehead as though gripping the peak of a hat between fingers and thumb; then move it forward a few inches. Next point the index finger forward. If it is obvious that a male is being referred to, the sign for *male* can be omitted.

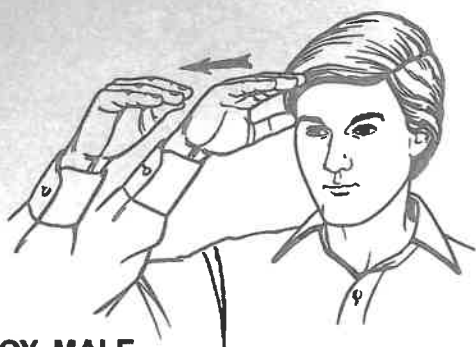
Memory aid: The signer directs attention by pointing.



SHE, HER

Trace the right jawbone from ear to chin with the palm side of the right A thumb; then point the index finger forward. If it is obvious that a female is being referred to, the sign for *female* can be omitted.

Memory aid: The signer directs attention by pointing.

**BOY, MALE**

Move the right hand to the forehead as though gripping the peak of a cap or hat between the fingers and thumb; then move it forward a few inches.

Memory aid: Old-fashioned tipping of caps by men, especially when greeting women.

**GIRL, MAIDEN, FEMALE**

Trace the right jawbone from ear to chin with the palm side of the right *A* thumb.

Memory aid: The thumb follows the location of the old-fashioned bonnet string.

**ADULT**

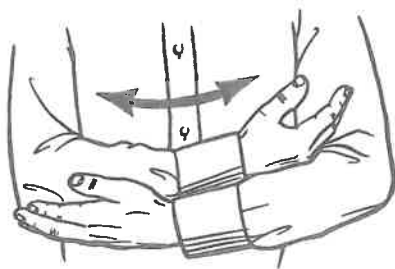
Place the right *A* hand thumb first at the right temple, then at the right side of the chin.

Memory aid: The initial indicates the word, and the two locations refer to the basic positions for *male* and *female*.

**CHILD, CHILDREN**

Place the right flat downturned hand before the body and motion as if patting the head of a child. When referring to more than one child, move the hand to another position and repeat the sign.

Memory aid: *Children* are shorter than adults.

**BABY, INFANT**

Hold the arms in the natural position for cradling a baby and rock the arms sideways.

Memory aid: The natural movement of comforting a *baby* in the arms.

**KID**

Extend the index and small finger of the right hand. With the palm facing down, put the index finger under the nose. The hand is then pivoted up and down slightly and often moved to the right simultaneously.

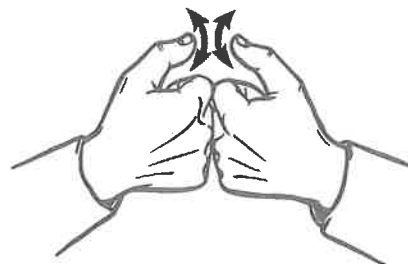
Memory aid: Suggests the runny nose of a young child.



BACHELOR

Put the index finger of the right *B* hand first on the right side of the mouth, then on the left. *Note:* Some signers reverse this action.

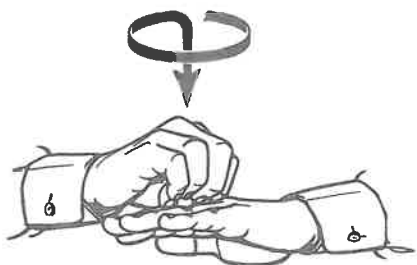
Memory aid: The *B* hand suggests the word, and the action can symbolize a mouth that has not yet spoken to end the state of *bachelorhood*.



SWEETHEART, BEAU, LOVER

Bring the knuckles of both *A* hands together with palms facing inward; then raise and lower both thumbs simultaneously.

Memory aid: Suggests two lovebirds billing and cooing.



ENGAGED (prior to marriage)

Circle the right *E* hand over the left palm-down flat hand; then place the right *E* on the left ring finger.

Memory aid: The *engagement* ring finger is given prominence.



MARRY, MARRIAGE

Clasp the hands in a natural position with the right hand above the left.

Memory aid: A couple joins hands during their wedding ceremony.



WEDDING

Point the fingers of both flat hands down from the wrists in the front. Swing the hands toward each other until the left fingers and thumb grasp the right fingers.

Memory aid: Suggests a bride and groom joining hands.



DIVORCE

Hold both *D* hands with palms facing and knuckles touching. Twist both hands outward and sideways until the palms face forward.

Memory aid: Two people once close to each other now separate.



TWINS

Place the thumb side of the right *T* hand first on the left side of the chin, then on the right.

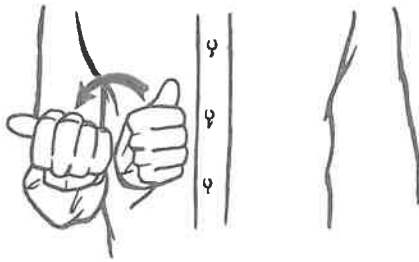
Memory aid: The two *T* positions on the same chin indicate the meaning.



CUTE

Stroke the chin several times with the fingers of the right *U* hand. Assume a smiling expression.

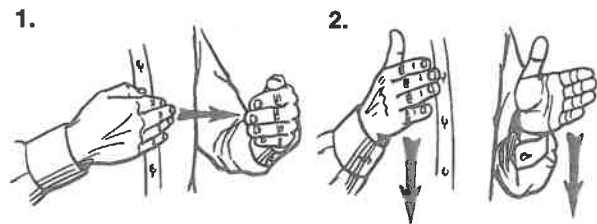
Memory aid: The sound of *U* rhymes with *cute*.



OTHER, ANOTHER

Hold the right *A* hand in front of the chest with upturned thumb. Pivot the hand from the wrist so that the thumb points to the right.

Memory aid: Pointing away from oneself with the thumb indicates *another*.



NEIGHBOR

Hold the left curved hand away from the body with palm facing in. Move the back of the right curved hand close to the palm of the left. Bring both flat hands down simultaneously with palms facing each other.

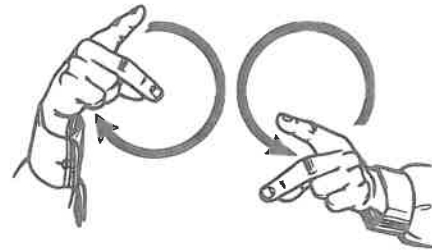
Memory aid: This is a combination of *near* and *person* (*personalizing word ending*).



PERSON

Place both *P* hands forward and move them downward simultaneously.

Memory aid: Suggests outlining the form of another *person*.



PEOPLE

Make inward circles alternately from the sides with both *P* hands. *Note:* Some signers prefer to direct the circles forward.

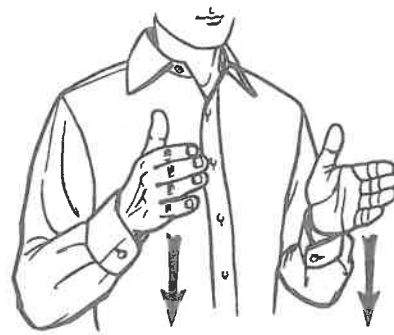
Memory aid: The *P* hands suggest the word, and the action suggests people milling around.



HEARING (person)

Place the right index finger in front of the mouth and make a few small forward circular movements.

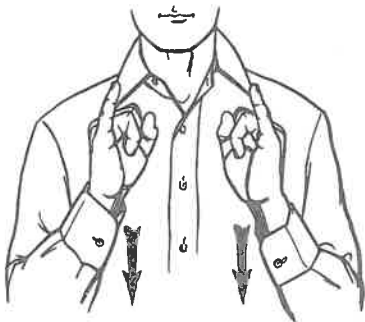
Memory aid: The sign is similar to the one for *say* and indicates that a *hearing* person can learn to speak easily.



PERSON (personalizing word ending)

Hold both flat open hands to the front with palms facing; then move them down simultaneously.

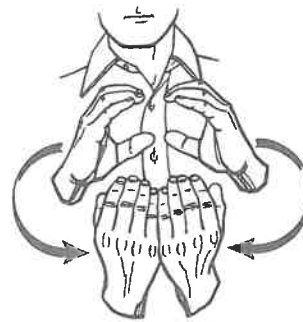
Memory aid: Suggests outlining the form of another *person*.



INDIVIDUAL

Drop both *I* hands simultaneously in front of the chest with palms facing.

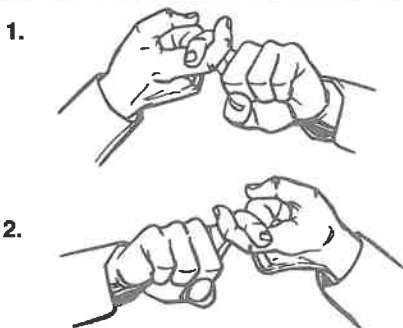
Memory aid: The movement is the same as for *person*, but here it is identified by the initial *I*.



GROUP, ASSOCIATION, TEAM, CLASS, AUDIENCE, COMPANY, SOCIETY, DEPARTMENT, ORGANIZATION

Hold both *C* hands upright before chest with palms facing. Move hands outward in a circle until little fingers touch. Initialize each sign if desired.

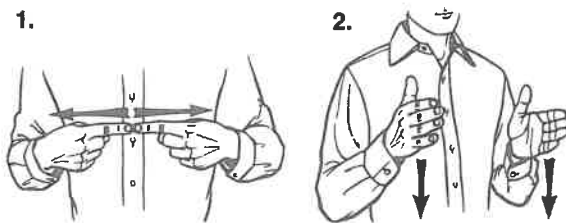
Memory aid: The circle suggests an area encompassing several people.



FRIEND, FRIENDSHIP

Interlock the right and left index fingers and repeat in reverse.

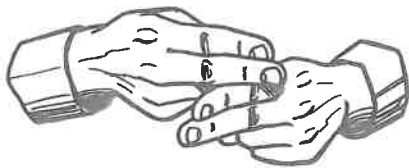
Memory aid: Suggests the link of *friendship*.



ENEMY, FOE, OPPONENT, RIVAL

Point the two index fingers toward each other with palms facing in. Move them outward sharply in opposite directions; then add the sign for *person* (*personalizing word ending*).

Memory aid: Symbolizes *enemies* drawing further and further apart.



NAME, CALLED, NAMED

Cross the middle-finger edge of the right *H* fingers over the index-finger edge of the left *H* fingers. To sign *called* or *named*, move the crossed *H* hands in a small forward arc together.

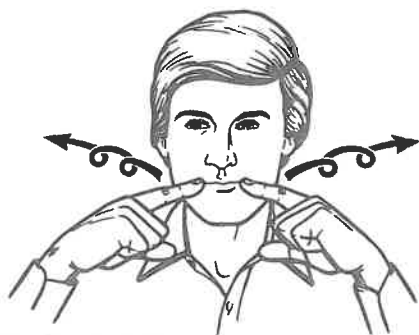
Memory aid: Reminds one that those who cannot write have to sign their *name* with an *X*.



WHO, WHOM

Make a counterclockwise circle in front of the lips with the right index finger.

Memory aid: Attention is drawn to the lips as they form the word shape.



FAMOUS, FAME

Point both index fingers toward the mouth and move them outward and upward in small spiraling circles.

Memory aid: Suggests that news about someone or something is being broadcast far and wide.



CHARACTER (individual)

Put the thumb side of the right *C* hand against the left flat hand and rotate forward in a clockwise circle.

Memory aid: The initial indicates the word, and the action suggests a circle of personal activities.

1.



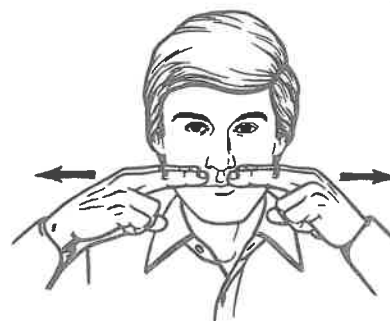
2.



HYPOCRITE, FAKE, IMPOSTER

Place the right flat hand over the back of the left flat hand, with all fingers pointing forward. Bend the hands downward as one.

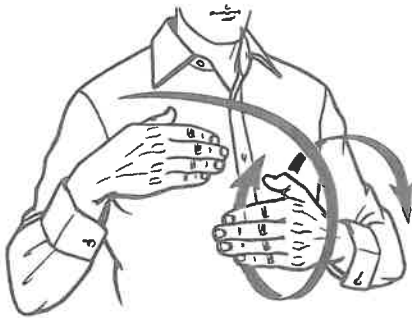
Memory aid: Suggests a covering, as in the use of a mask.



THIEF, BANDIT, BURGLAR, CROOK, ROBBER

Place the index-finger side of both *H* hands under the nose; then draw both hands outward.

Memory aid: Suggests a false mustache that can be used as a disguise.



GENERATION, ANCESTORS, DESCENDANTS

Start with both slightly cupped hands at the right shoulder; then roll them one over the other in a downward-forward movement. Reverse the action if the past generation is referred to.

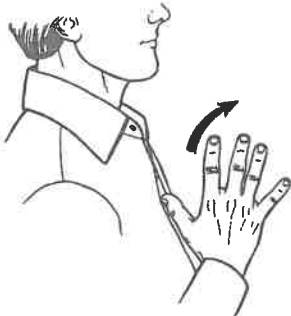
Memory aid: The movement symbolizes descending or ascending steps.



ASSOCIATE, EACH OTHER, MINGLE, FELLOWSHIP, MUTUAL, SOCIALIZE, ONE ANOTHER

Point the left *A* thumb upward while the right *A* thumb points downward and revolves in a counterclockwise direction around the stationary left thumb.

Memory aid: Suggests the *mingling* of people.



POLITE, COURTEOUS, MANNERS

Place the thumb edge of the right flat open hand at the chest and pivot the hand forward a few times or wiggle the fingers instead of pivoting the hand.

Memory aid: Symbolizes the old-fashioned ruffled shirt or blouse of a refined person.



I
Position the right *I* hand with palm facing left and thumb touching the chest.

Memory aid: The initial *I* in close proximity to the body suggests the individual.



ME

Point the right index finger toward the chest.

Memory aid: The signer directs attention to himself.



MY, MINE, OWN, PERSONAL

Place the palm of the right flat hand on the chest.

Memory aid: The hand over the heart suggests protection of *personal* belongings.



MYSELF, SELF

Bring the A hand against the center of the chest with palm facing left.

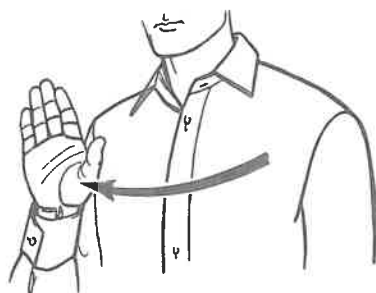
Memory aid: The thumb can be thought of as representing *self*.



YOU

Point the right index finger to the person being addressed. Or, if referring to several people, make a sweeping motion from left to right.

Memory aid: The person being pointed to clearly understands the reference to self.



YOUR, YOURS (plural)

Move the flat hand across the front of the body from left to right with the palm facing outward.

Memory aid: The flat hand and the left to right movement symbolizes possession by several people.



YOURSELF, HERSELF, HIMSELF, ITSELF, ONESELF, THEMSELVES, YOURSELVES

Hold the right A hand thumb up and make several short forward movements in the direction of the person or object referred to.

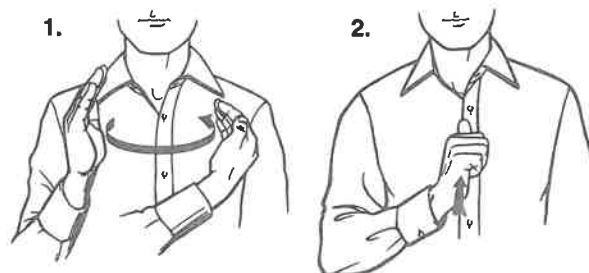
Memory aid: The jerking movement can suggest the individual nature of persons or things.



OUR

Place the slightly cupped right hand on the right side of the chest with palm facing left. Move the right hand forward in a circular motion, bringing it to rest near the left shoulder with the palm facing right.

Memory aid: The circular movement suggests the inclusion of others.



OURSELVES

Place the slightly cupped right hand on the right side of the chest, palm left. Move the right hand forward in a circular motion, bringing it to rest near the left shoulder with the palm facing right. Place the right A hand against the center of the chest, palm left.

Memory aid: The signs for *our* and *self*.



**HIS, HER, THEIR,
YOUR, YOURS (singular)**

Push the right flat hand forward with palm facing out toward the person or persons being referred to. The signs for *male* and *female* can precede *his* and *her* if it is not obvious from the context.

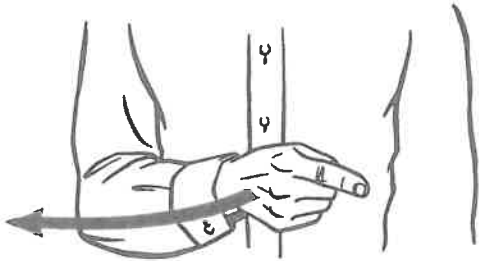
Memory aid: Suggests the idea of something separate or apart from the signer.



WE, US

Touch the right index finger on the right shoulder; then move it in a forward semi-circle until it touches the left shoulder. Sometimes the *W* or *U* hand is used instead of the index finger to indicate either *we* or *us* respectively.

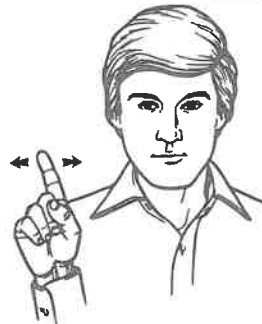
Memory aid: Touching two shoulders suggests more than one person.



THEY, THEM, THESE, THOSE

Point the right index finger forward or in the direction of the persons or objects referred to, then move it to the right.

Memory aid: The signer directs attention by pointing.



SOMEONE, SOMEBODY, SOMETHING

Hold the right index finger up with palm facing forward and shake it slightly back and forth from left to right.

Memory aid: The index finger represents *someone* or *something*.

1.



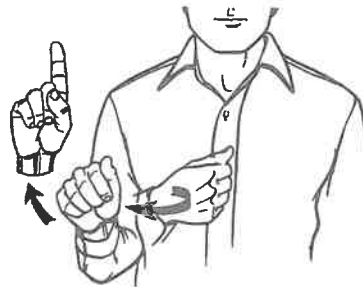
2.



EVERYONE, EVERYBODY

Hold the left *A* hand to the front with palm facing right. The knuckles and thumb of the right *A* hand rub downward on the left thumb a few times. Add the numerical sign for *one*.

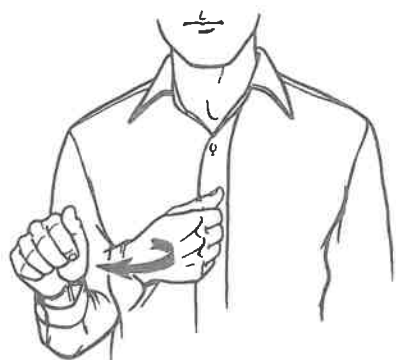
Memory aid: The right thumb seems to be giving recognition to the left thumb.



ANYONE, ANYBODY

Place the right *A* hand in front of the body with the palm facing in. Move the *A* hand forward to the right until the palm faces forward. Point up with the right index finger.

Memory aid: The hand seems to be engaged in a wide-angled search for something or someone.



ANY

Place the right A hand in front of the body with the palm facing in. Move the A hand forward to the right until the palm faces forward.

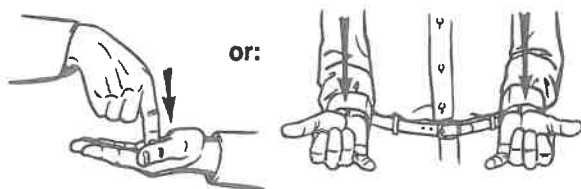
Memory aid: The thumb seems to be searching for something or someone.



EACH, EVERY

Hold the left A hand to the front with palm facing right. The knuckles and thumb of the right A hand rub downward on the left thumb a few times.

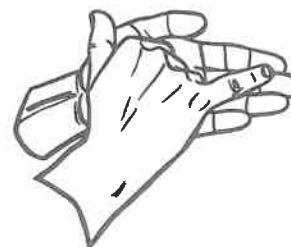
Memory aid: The right thumb seems to be giving recognition to the left thumb.



THIS

Put the right index fingertip into the palm of the flat left hand if something specific is indicated. Drop both Y (or flat) hands together with palms facing up if something more abstract is indicated.

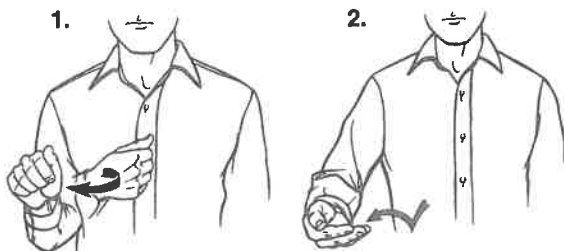
Memory aid: The right index finger points to an object in the left hand. Or both hands seem to be holding something.



THAT

Place the right Y hand on the left upturned palm. *Note:* When signing in English syntax order, many signers omit the sign for *that* when it is a conjunctive, as in the sentence, It is good *that* you trust me.

Memory aid: *That* is often used in relation to either asking or answering a question. The Y hand suggests the interrogative *why?*



ANYTHING

Place the right A hand in front of the body with the palm facing in. Move the A hand forward to the right until the palm faces forward. Drop the right hand slightly a few times as it is moved to the right.

Memory aid: The hand movements suggest the idea of presenting several alternatives.



IT

Hold the flat left hand to the front with the palm facing right; then move the little finger of the right I hand into the left palm.

Memory aid: The initialized right hand indicates the word and seems to be pointing out something specific.